

#### DESCRIPTION

The 704-15K36 & 704-15K36T series of transient voltage suppression modules are for use primarily in avionics equipment. This series meets all applicable environmental requirements of MIL-S-19500. The sub-assemblies are metallurgically bonded and packaged in a hermetically sealed package. The hermetically sealed package provides high reliability in harsh environmental conditions. In addition, the subassemblies can be 100% TX screened per MIL-S-19500/516 or /507. Although this series has been designed for 28 volt aircraft applications, different voltages may be special ordered for specific applications. TVS modules are most often used in applications where discrete TVS diodes do not have high enough surge handling capability to suppress large power surges.

#### SCREENING:

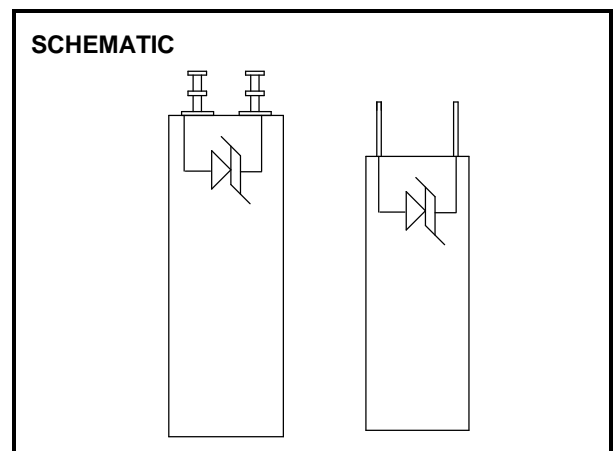
100% Screening is available per MIL-S-19500/516. For ordering use the following suffix:  
 H1 - Submodule screening  
 H2 - Submodule & module screening  
 H3 - Submodule & module screening + Group B & C

#### FEATURES:

- 15,000 watts Peak Pulse Power ( $t_p = 10 \times 1000\mu s$ )
- 28 Volt power supply protection
- For use in airborne equipment
- Unidirectional
- Custom voltages available from factory.

#### MECHANICAL CHARACTERISTICS:

- Molded Case
- Readily solderable terminals
- Marking : Logo, part number, and date code



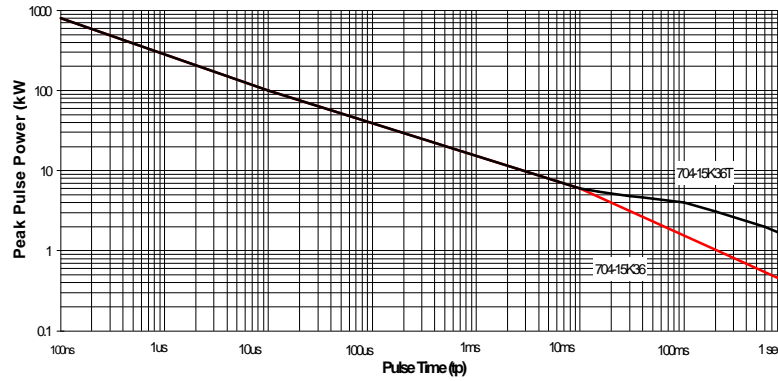
#### MAXIMUM RATINGS

RATING	SYMBOL	VALUE	UNIT
Peak Pulse Power ( $t_p = 10 \times 1000\mu s$ )	Ppk	15,000	Watts
Operating Temperature	Tj	-65 to +150	°C
Storage Temperature	Tstg	-65 to +150	°C

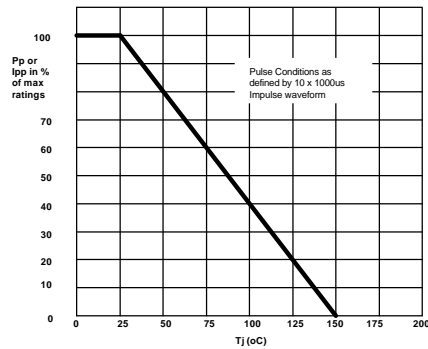
#### ELECTRICAL CHARACTERISTICS @ 25°C (unless otherwise specified)

PART NUMBER	REVERSE STAND-OFF VOLTAGE $V_{RWM}$ (V)	REVERSE LEAKAGE CURRENT $I_R$ ( $\mu A$ )	MINIMUM BREAKDOWN VOLTAGE $V_{BR} @ I_T$ (V)	TEST CURRENT $I_T$ (mA)	MAXIMUM CLAMPING VOLTAGE $V_C @ I_{pp}$ (V)	PEAK PULSE CURRENT $I_{pp}$ $T_p = 1ms$ (A)	MAXIMUM FORWARD VOLTAGE $V_F @ I_F = 100A$ (V)
704-15K36	31.5	100	36	10	51	300	3.0
704-15K36T	31.5	500	36	10	51	300	15.0

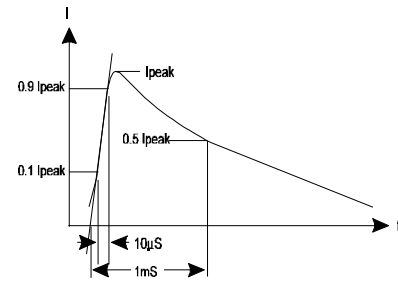
### PEAK PULSE POWER vs. PULSE TIME



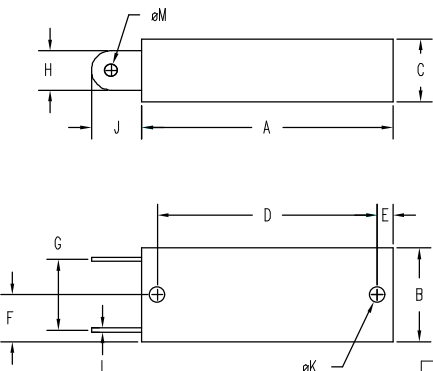
### PULSE DERATING CURVE



### 10/1000μs IMPULSE WAVEFORM

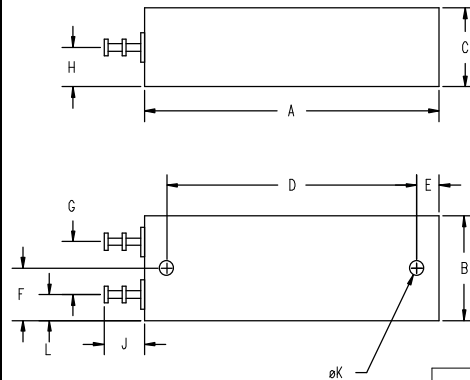


### MECHANICAL OUTLINE - 704-15K36



DIM*	INCHES		MM		NOTE
	MIN	MAX	MIN	MAX	
A	1.97	2.03	50.0	51.6	
B	.72	.78	18.2	19.9	
C	.47	.53	11.9	13.5	
D	1.73	1.77	43.9	45.0	
E	.110	.140	2.7	3.6	
F	.345	.405	8.7	10.3	
G	.532	.592	13.5	15.1	
H	.306	.320	7.7	8.2	
J	.350	.450	8.8	11.5	
L	.120	.130	3.0	3.3	
øK	.027	.037	.68	.94	
eM	.095	.115	2.4	3.0	

### MECHANICAL OUTLINE - 704-15K36T



DIM*	INCHES		MM		NOTE
	MIN	MAX	MIN	MAX	
A	2.47	2.53	62.7	64.3	
B	.86	.92	21.8	23.4	
H	.305	.365	7.7	9.3	
J	.325	.365	8.2	9.3	
øK	.120	.130	3.0	3.3	
L	.19	.25	4.8	6.4	



LittleDiode supplies new, hard to find or obsolete electronic components and semiconductors all over the world.

With over two million different components listed you are sure to find the part you need.

Feel free to visit us today at our online store:

**[LittleDiode.com](http://LittleDiode.com)**

Looking forward to providing you with the best possible service.