

Microsemi Corp.

The diode experts

SANTA ANA, CA

SCOTTSDALE, AZ

For more information call:
(602) 941-6300

**DLTS-5
thru
DLTS-30**

TAZ

FEATURES

This series of TAZ devices is packaged in a ceramic, dual-in-line, hermetically sealed package. These components offer 15 protective devices; unidirectional or bidirectional, common buss connections, per package. The dual-in-line is designed specifically for data line protection, at the P.C. board level. TTL and MOS voltages are available for protection of input/output data circuits.

- UNIDIRECTIONAL OR BIDIRECTIONAL
- MULTIPLE TAZ ARRAY
- DUAL-IN-LINE, 16 PIN HERMETIC PACKAGE
- LOW CAPACITANCE
- μ P/mP COMPATIBLE PACKAGE
- VOLTAGE RANGE OF 5V TO 100V AVAILABLE
- COMMON BUSS CONFIGURATION
- MILITARY ENVIRONMENT CAPABILITY

MAXIMUM RATINGS

500 Watts Peak Pulse Power/Position (@ 25°C) (8 x 20 μ s)
 $t_{clamping}$ (0 volts to BV min.) Less than 1×10^{-12} seconds (theoretical)
(unidirectional) 5×10^{-9} seconds (bidirectional) (theoretical)
Operating and Storage Temperatures: -55°C to +150°C
Forward Surge Rating: 10 Amps, 1/120 sec. @ 25°C (unidirectional)
Repetition Rate (duty cycle): .01%

AVAILABLE DEVICE TYPES

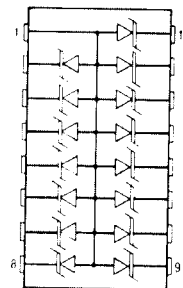
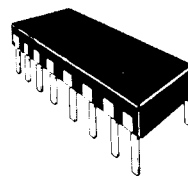
UNIDIRECTIONAL

DLTS-5, A
DLTS-12, A
DLTS-17, A
DLTS-24, A
DLTS-30, A

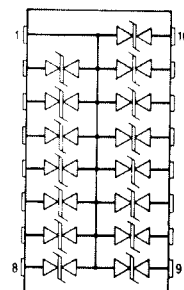
BIDIRECTIONAL

DLTS-8C, CA
DLTS-13C, CA
DLTS-19C, CA
DLTS-30C, CA

DATA LINE TRANSIENT SUPPRESSOR



TYPICAL
UNIDIRECTIONAL
SCHEMATIC



TYPICAL
BIDIRECTIONAL
SCHEMATIC

MECHANICAL CHARACTERISTICS

CASE: Ceramic, 16 pin dual-in-line
(.300" row spacing)

POLARITY: Pin No. 1 marked
with a flag on lead and a dot on
top of package. Body marked
with type number.

WEIGHT: 3.5 grams (Appx.)

DLTS thru DLTS - 30

ELECTRICAL CHARACTERISTICS @ 25°C

MICROSEMI PART NUMBER	REVERSE STAND-OFF VOLTAGE V_{WM} VOLTS	MINIMUM BREAKDOWN VOLTAGE @ 1 mA $V_{(BR)}$ VOLTS	MAXIMUM CLAMPING VOLTAGE @ $I_{PP2} = 1A$ ($8 \times 20 \mu s$) V_{C1} VOLTS	MAXIMUM CLAMPING VOLTAGE @ $I_{PP2} = 10A$ ($8 \times 20 \mu s$) V_{C2} VOLTS	MAXIMUM REVERSE LEAKAGE @ V_{WM} I_D μA	MAXIMUM CAPACITANCE @ DV 1MHz C pF	MAXIMUM VOLTAGE TEMPERATURE VARIATION OF $V_{(BR)}$ MV/C
Unidirectional							
DLTS-5	5	6.0	10.2	12.5	200	880	5
DLTS-5A	5	6.0	9.5	10.6	200	880	5
DLTS-12	12	13.3	21.1	26.0	2	440	18
DLTS-12A	12	13.3	19.1	23.5	2	440	18
DLTS-17	17	19.2	30.4	37.4	2	330	20
DLTS-17A	17	19.2	27.5	33.9	2	330	20
DLTS-24	24	26.7	42.3	52.1	2	275	31
DLTS-24A	24	26.7	38.3	47.2	2	275	31
DLTS-30	30	33.3	52.8	65.0	2	220	39
DLTS-30A	30	33.3	47.8	58.8	2	220	39
Bidirectional							
DLTS-8C	8	8.5	13.4	16.6	10	440	9
DLTS-8CA	8	8.5	12.2	15.0	10	440	9
DLTS-13C	13	14.4	22.8	28.1	4	385	18
DLTS-13CA	13	14.4	20.6	25.4	4	385	18
DLTS-19C	19	21.6	34.2	42.1	4	275	24
DLTS-19CA	19	21.6	31.0	38.1	4	275	24
DLTS-30C	30	33.3	52.8	65.0	4	165	39
DLTS-30CA	30	33.3	47.8	58.8	4	165	39

"A", "CA", suffix denotes selected clamping voltage.

NOTE 1: A TAZ is normally selected according to the reverse "Stand Off Voltage" V_{WM} which should be equal to or greater than the DC or continuous peak operating voltage level.

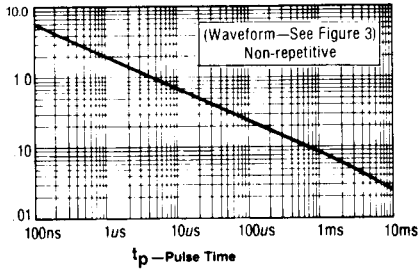


FIGURE 1
PEAK PULSE POWER VS PULSE TIME
(PER POSITION)

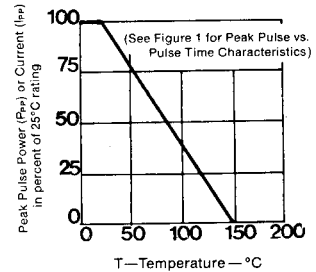


FIGURE 2
DERATING CURVE

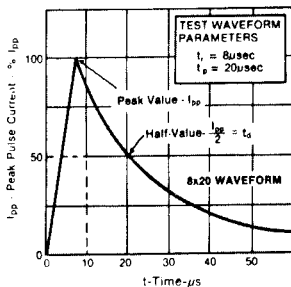
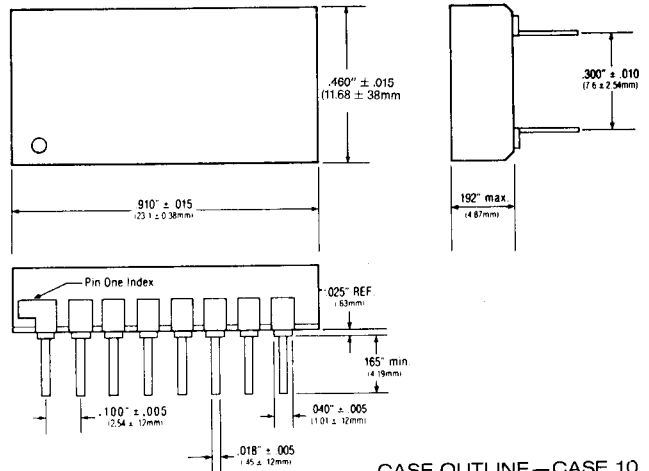


FIGURE 3
PULSE WAVEFORM



CASE OUTLINE—CASE 10



LittleDiode supplies new, hard to find or obsolete electronic components and semiconductors all over the world.

With over two million different components listed you are sure to find the part you need.

Feel free to visit us today at our online store:

LittleDiode.com

Looking forward to providing you with the best possible service.