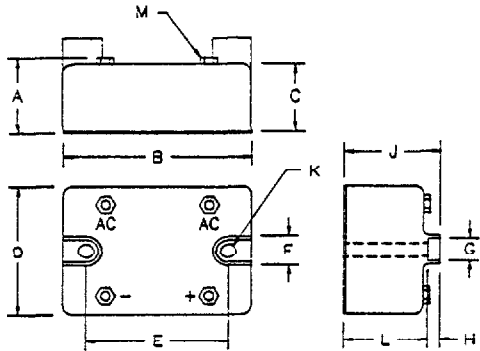


Single Phase Bridge Modules EH60, EH75



Dim.	Inches		Millimeter		Notes
	Minimum	Maximum	Minimum	Maximum	
A	—	1.10	—	27.94	
B	2.25	2.40	57.15	60.96	
C	.930	.950	23.62	24.13	
D	1.740	1.760	44.19	44.70	
E	1.883	1.887	47.82	47.92	
F	.495	.505	12.57	12.83	
G	.325	.335	8.25	8.50	
H	.215	.225	5.46	5.71	
J	1.270	1.300	32.25	33.02	
K	.198	.208	5.02	5.28	Dia.
L	1.055	1.075	26.79	27.30	
M	#10-32 Tapped Holes				

E

Microsemi Catalog Number	Repetitive Peak Reverse Voltage	
EH6002B*	EH7502B*	200
EH6004B*	EH7504B*	400
EH6006B*	EH7506B*	600
EH6008B*	EH7508B*	800
EH6010B*	EH7510B*	1000
EH6012B*	EH7512B*	1200

*Add S for Transient Suppressor across output

- Integral Transient Suppression Available
- High Terminal-to-base Isolation of 2500VAC RMS
- Available to 1200V
- Mounting Bolts Isolated From Power Terminals

Electrical Characteristics			
	EH60	EH75	
Maximum DC output current, single phase	I_o 60A	75A	Sine wave, 180° conduction
Maximum case temperature	T_C 104°C	105°C	
Maximum surge current per diode	I_{FSM} 1050A	1500A	8.3ms, half sine, $T_J = 175^\circ\text{C}$
Max. I^2t for fusing	I^2t 4600A ² S	9300A ² S	
Max. peak forward voltage per diode	V_{FM} 1.2V	1.1V	• I_o : $T_J = 25^\circ\text{C}$
Max. peak reverse voltage per diode	IRM 4mA		V_{RRM} , $T_J = 150^\circ\text{C}$
Minimum isolation voltage	MSOL 2500VRMS		any terminal-to-base

Thermal and Mechanical Characteristics		
Storage temp range	T_{STG}	-40°C to 175°C
Operating junction temp range	T_J	-40°C to 175°C
Max thermal resistance per diode	EH60 $R_{\theta JC}$	1.0°C/W Junction to case
	EH75 $R_{\theta JC}$	0.85°C/W Junction to case
Max mounting torque		30 lb-in
Typical thermal resistance	$R_{\theta CS}$	0.07°C/W Case to sink
Typical Weight		5.8 ounces (165 grams)

Microsemi Corp.
Colorado

PH: 303-469-2161
FAX: 303-400-3775

E-67

EH60, EH75

Figure 1
Typical Forward Characteristics - Per Diode

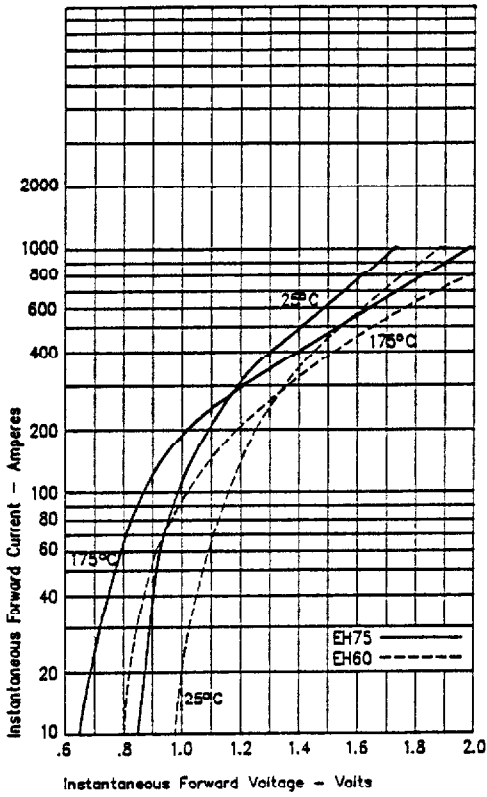


Figure 3
Maximum Nonrepetitive Surge Current - Per Diode

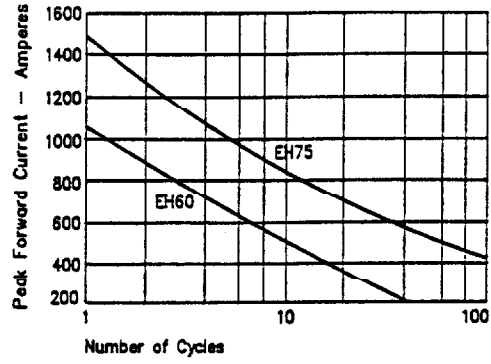
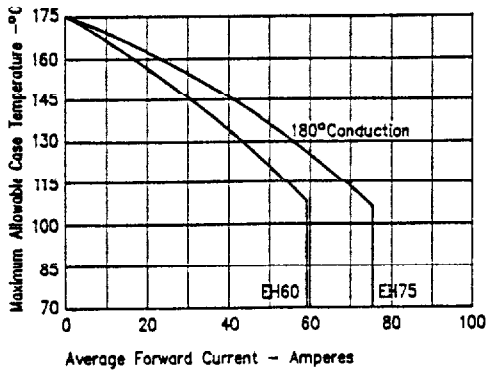


Figure 2
Forward Current Derating - Per Diode



This datasheet has been downloaded from:

www.DatasheetCatalog.com

Datasheets for electronic components.



LittleDiode supplies new, hard to find or obsolete electronic components and semiconductors all over the world.

With over two million different components listed you are sure to find the part you need.

Feel free to visit us today at our online store:

LittleDiode.com

Looking forward to providing you with the best possible service.