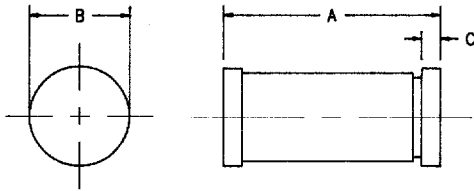


# 1 Amp Schottky Rectifier HSM150, HSM160



Dim.	Inches		Millimeter		Notes
	Minimum	Maximum	Minimum	Maximum	
A	.189	.205	4.80	5.20	
B	.094	.105	2.39	2.66	Dia.
C	.016	.022	.41	.55	

GLASS HERMETIC DO213AB

Microsemi Catalog Number	Working Peak Reverse Voltage	Repetitive Peak Reverse Voltage	
HSM150 HSM160	50V 60V	50V 60V	<ul style="list-style-type: none"> <li>• Schottky Barrier Rectifier</li> <li>• Guard Ring Protection</li> <li>• 150°C Junction Temperature</li> <li>• VRRM 50 to 60 Volts</li> </ul>

Electrical Characteristics		
Average forward current	IF(AV) 1.0 Amps	TA = 118°C, Square wave, RθJC = 45°C/W
Maximum surge current	IFSM 75 Amps	8.3ms, half sine, TJ = 150°C
Max peak forward voltage	VFM .51 Volts	IFM = 0.1A; TJ = 25°C*
Max peak forward voltage	VFM .69 Volts	IFM = 1.0A; TJ = 25°C*
Max peak reverse current	IRM 100 μA	VRRM, TJ = 25°C
Typical junction capacitance	CJ 55pF	VR = 5.0V, TJ = 25°C
*Pulse test: Pulse width 300 μsec, Duty cycle 2%		

Thermal and Mechanical Characteristics		
Storage temperature range	TSTG	-65°C to + 175°C
Operating junction temp range	TJ	-65°C to + 150°C
Maximum thermal resistance	RθJC	45°C/W Junction to case
Weight		.0047 ounces (.012 grams) typical

# HSM150, HSM160

Figure 1  
Typical Forward Characteristics

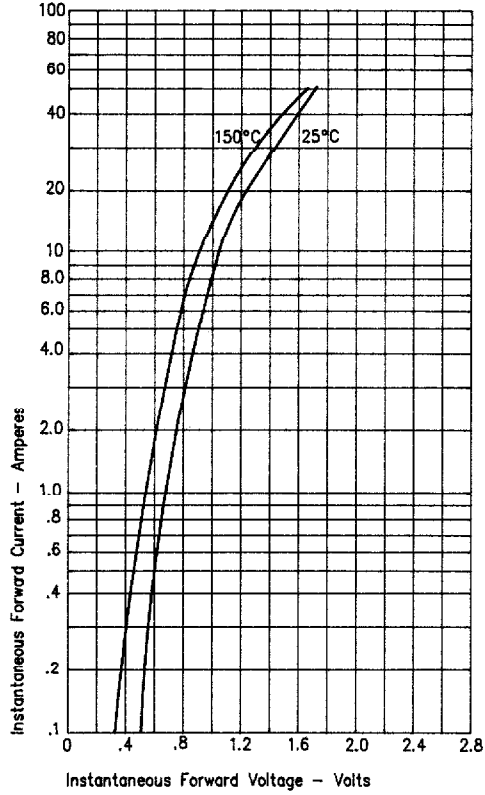


Figure 3  
Typical Junction Capacitance

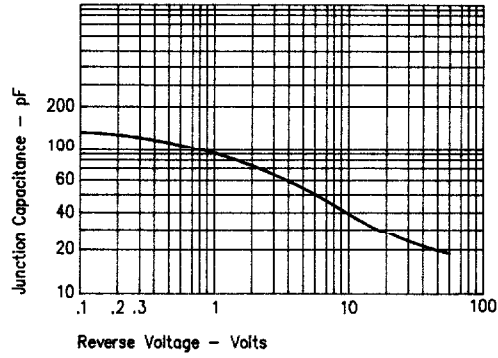
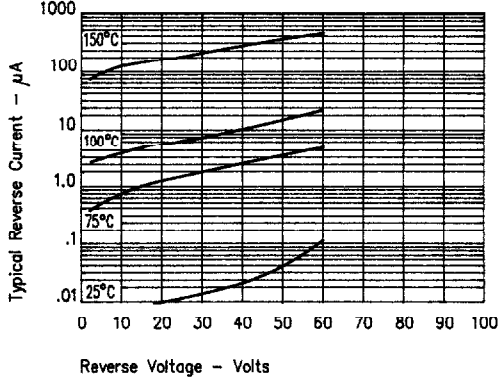


Figure 2  
Typical Forward Characteristics



This datasheet has been downloaded from:

[www.DatasheetCatalog.com](http://www.DatasheetCatalog.com)

Datasheets for electronic components.



LittleDiode supplies new, hard to find or obsolete electronic components and semiconductors all over the world.

With over two million different components listed you are sure to find the part you need.

Feel free to visit us today at our online store:

[LittleDiode.com](http://LittleDiode.com)

Looking forward to providing you with the best possible service.