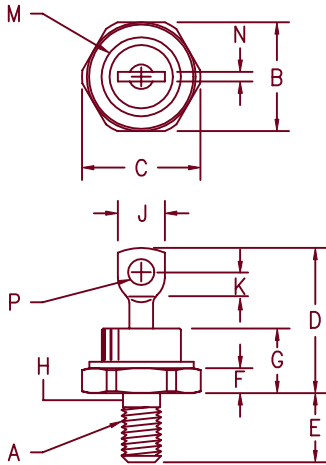


50 Amp Schottky Rectifier 1N6097-1N6098



- Notes:
1. Full threads within 2 1/2 threads
 2. Standard Polarity: Stud is Cathode

Dim.	Inches		Millimeter		Notes
	Minimum	Maximum	Minimum	Maximum	
A	---	---	---	---	1/4-28
B	.669	.687	17.19	17.44	
C	---	.794	---	20.16	
D	---	1.000	---	25.40	
E	.422	.453	10.72	11.50	
F	.115	.200	2.93	5.08	
G	---	.450	---	11.43	
H	.220	.249	5.58	6.32	1
J	---	.375	---	9.52	
K	.156	---	3.96	---	
M	---	.515	---	13.08	Dia.
N	---	.080	---	2.03	
P	.140	.175	3.56	4.45	Dia.

D0203AB (D05)

Microsemi Catalog Number	Working Peak Reverse Voltage	Repetitive Peak Reverse Voltage
1N6097	30V	30V
1N6098	40V	40V

- Schottky Barrier Rectifier
- 150°C Junction Temperature
- Guard Ring Protection
- VRRM - 30 to 40 Volts
- Reverse Energy Tested

Electrical Characteristics

Average forward current	I _{F(AV)} 50 Amps	T _C = 70°C, square wave, R _{θJC} = 1.0°C/W 8.3 ms, half sine T _J = 150°C f = 1 KHz, 25°C, 1 μsec square wave
Maximum surge current	I _{FSM} 800 Amps	
Max repetitive peak reverse current	I _{R(OV)} 2 Amps	I _{FM} = 10A: T _J = 25°C* I _{FM} = 157A: T _J = 70°C*
Max peak forward voltage	V _{FM} .60 Volts	
Max peak forward voltage	V _{FM} .86 Volts	V _{RRM} , T _J = 125°C* V _{RRM} , T _J = 25°C
Max peak reverse current	I _{RM} 250 mA	
Max peak reverse current	I _{RM} 2 mA	V _R = 1.0V, T _J = 25°C
Max junction capacitance	C _J 7000 pF	

*Pulse test: Pulse width 300 μsec, Duty cycle 2%

Thermal and Mechanical Characteristics

Storage temp range	T _{STG}	-65°C to 150°C
Operating junction temp range	T _J	-65°C to 150°C
Max thermal resistance	R _{θJC}	1.0°C/W Junction to case
Max mounting torque		30 inch pounds
Weight		0.54 ounce (15.3 grams) typical

1N6097-1N6098

Figure 1
Typical Forward Characteristics

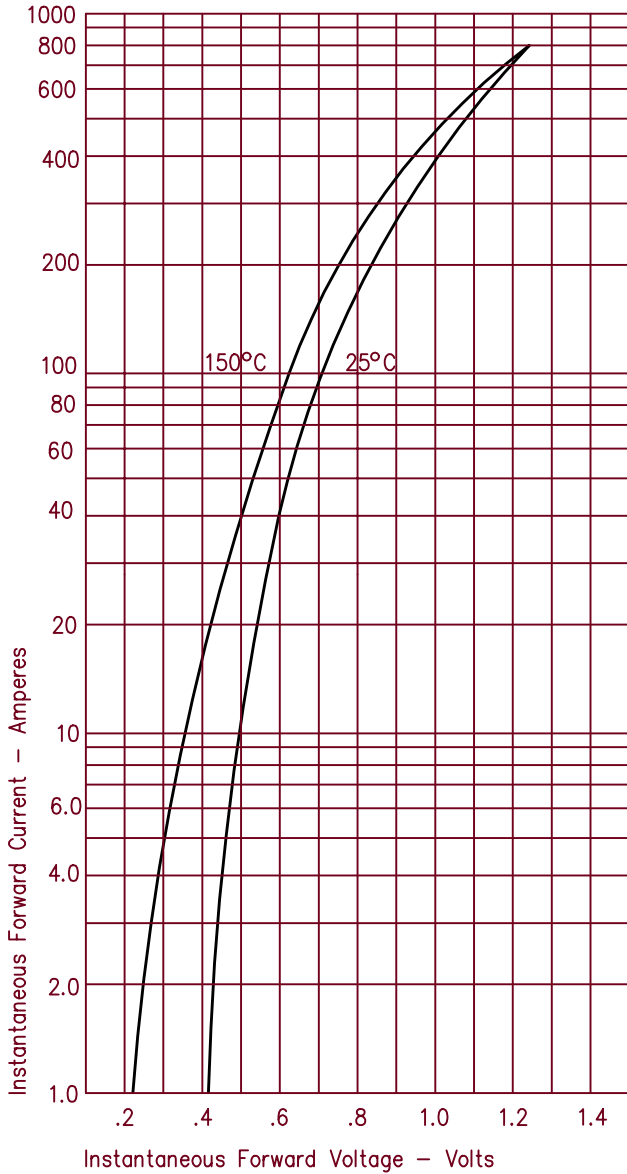


Figure 3
Typical Junction Capacitance

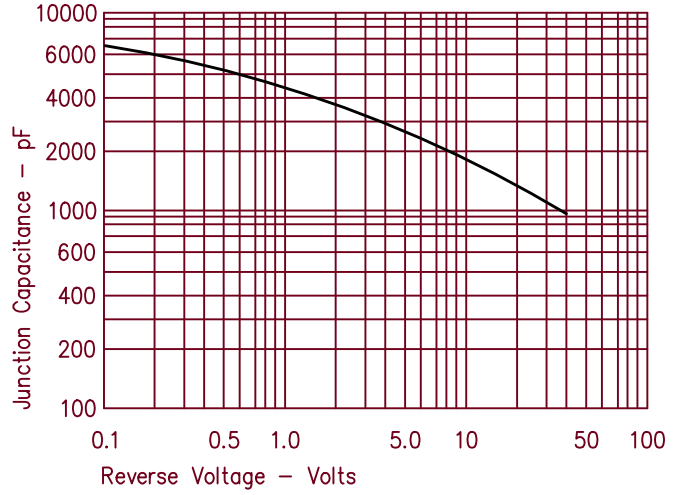


Figure 4
Forward Current Derating

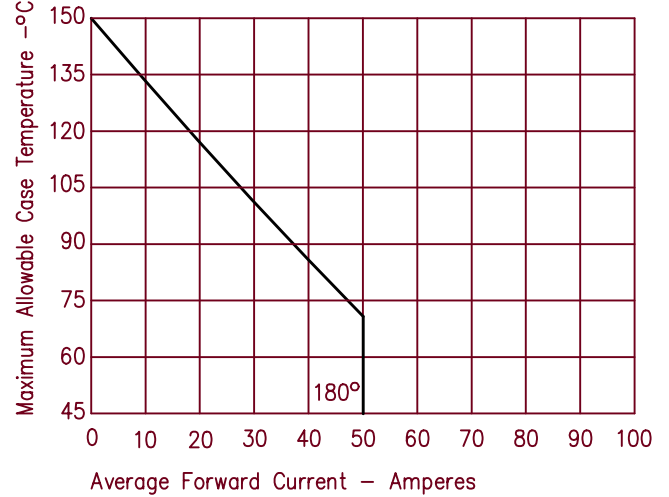


Figure 2
Typical Reverse Characteristics

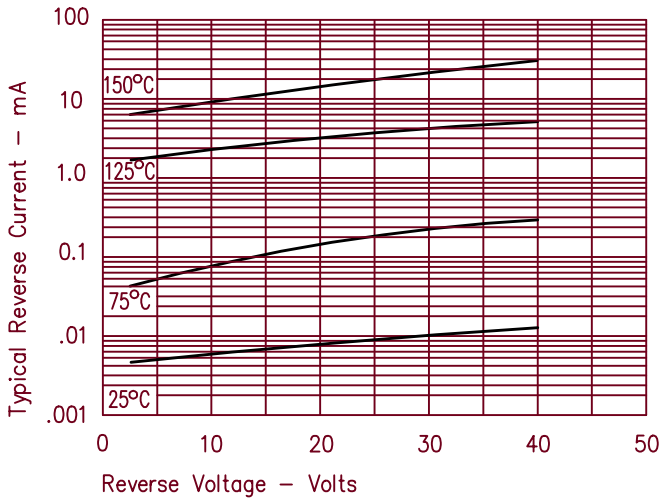
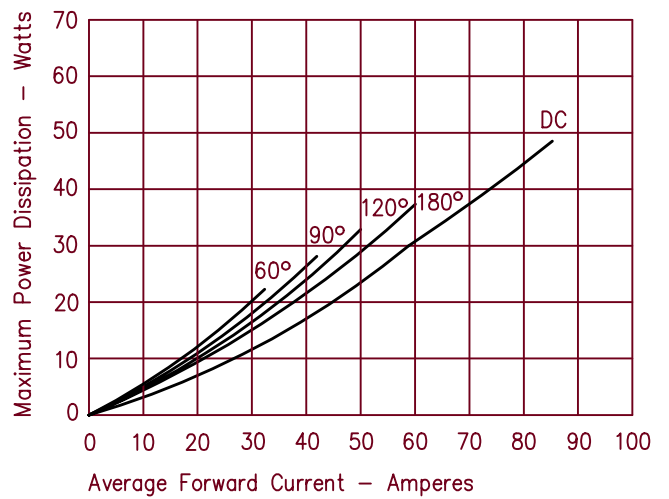


Figure 5
Maximum Forward Power Dissipation





LittleDiode supplies new, hard to find or obsolete electronic components and semiconductors all over the world.

With over two million different components listed you are sure to find the part you need.

Feel free to visit us today at our online store:

LittleDiode.com

Looking forward to providing you with the best possible service.