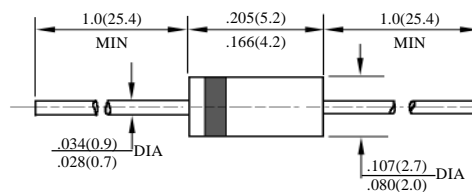


1N4942 – 1N4948

 快速玻璃钝二极管
 FAST GPP DIODES

型号 TYPE	最大反向 峰值电压 Maximum Peak Reverse Voltage	最大平均正向电流 Maximum Average Rectified Current @ Half-Wave Resistive Load 60Hz		最大正向浪涌电流 Maximum Forward Peak Surge Current @ 8.3ms Superimposed	最大反向漏电流 Maximum Reverse Current @ PRV @ T _A =25°C	最大正向电压 Maximum Forward Voltage @ T _A =25°C		最大反向 恢复时间 Maximum Reverse Recovery Time	外型尺寸 Package Dimensions
	PRV V _{PK}	I _O @ T _L A _{AV}	°C	I _{FM} (Surge) A _{PK}	I _R μA _{dc}	I _{FM} A _{PK}	V _{FM} V _{PK}	T _{rr} ns	
1N4942	200	1.0	75	25	5.0	1.0	1.3	150	DO-41
1N4944	400							150	
1N4946	600							250	
1N4947	800							250	
1N4948	1000							500	

 T_{rr}测试条件: I_F = 0.5A, I_R = 1.0A, I_{RR} = 0.25A

 T_{rr} Test Conditions: I_F = 0.5A, I_R = 1.0A, I_{RR} = 0.25A


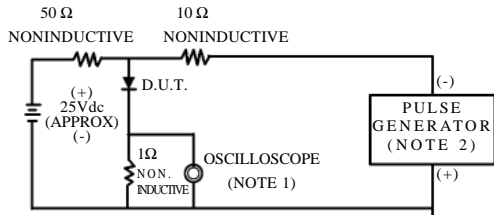
DO – 41

1N4942-1N4948

快速 GPP 二极管额定值与特性曲线

RATING & CHARACTERISTIC CURVES OF FAST GPP DIODE

FIG.1-TEST CIRCUIT DIAGRAM AND REVERSE RECOVERY TIME CHARACTERISTIC



NOTES: 1. Rise Time=7ns max.
Input Impedance=1megohm.22pF.
2. Rise Time=10ns max.
Source Impedance=50 ohms.

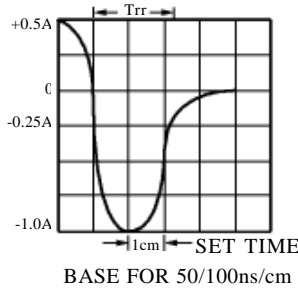


FIG. 2 – TYPICAL FORWARD CURRENT DERATING CURVE

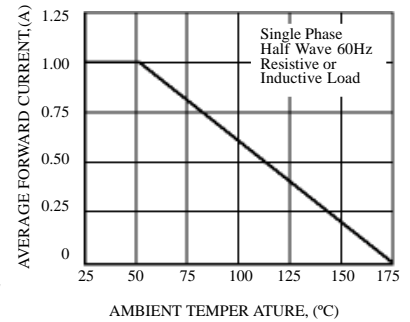


FIG. 3 – TYPICAL REVERSE CHARACTERISTICS

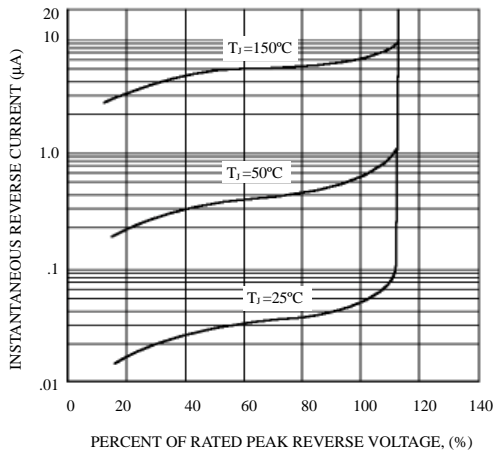


FIG. 4 – TYPICAL INSTANTANEOUS FORWARD CHARACTERISTICS

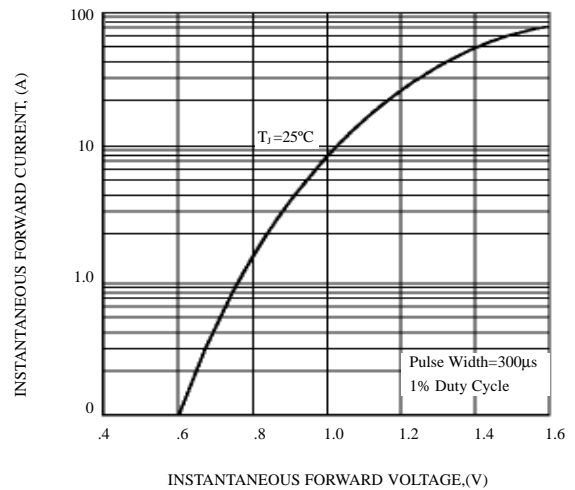


FIG. 5 – MAXIMUM NON-REPETITIVE FORWARD SURGE CURRENT

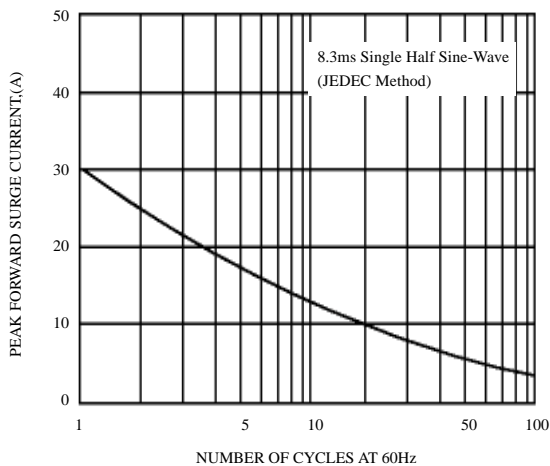
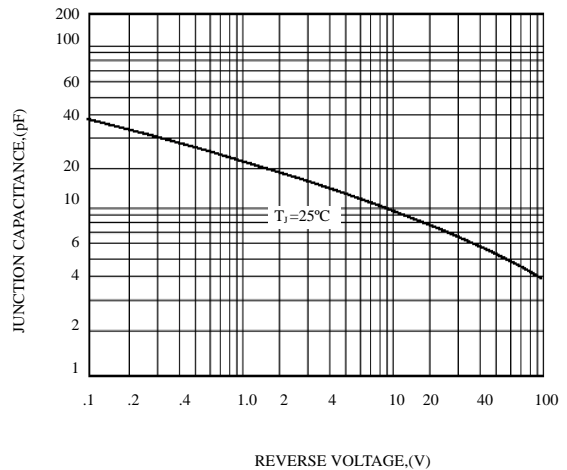


FIG. 6 – TYPICAL JUNCTION CAPACITANCE





LittleDiode supplies new, hard to find or obsolete electronic components and semiconductors all over the world.

With over two million different components listed you are sure to find the part you need.

Feel free to visit us today at our online store:

LittleDiode.com

Looking forward to providing you with the best possible service.