

# DS1649/DS3649/DS1679/DS3679 Hex TRI-STATE<sup>®</sup> TTL to MOS Drivers

## General Description

The DS1649/DS3649 and DS1679/DS3679 are Hex TRI-STATE MOS drivers with outputs designed to drive large capacitive loads up to 500 pF associated with MOS memory systems. PNP input transistors are employed to reduce input currents allowing the large fan-out to these drivers needed in memory systems. The circuit has Schottky-clamped transistor logic for minimum propagation delay, and TRI-STATE outputs for bus operation.

The DS1649/DS3649 has a 15Ω resistor in series with the outputs to dampen transients caused by the fast-switching

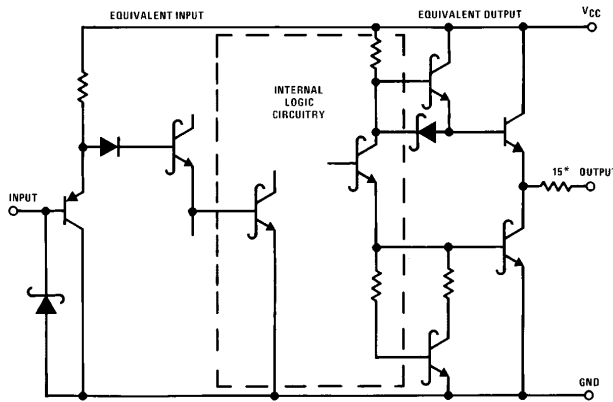
output. The DS1679/DS3679 has a direct low impedance output for use with or without an external resistor.

## Features

- High speed capabilities
  - Typ 9 ns driving 50 pF
  - Typ 30 ns driving 500 pF
- TRI-STATE outputs for data bussing
- Built-in 15Ω damping resistor (DS1649/DS3649)
- Same pin-out as DM8096 and DM74366

TRI-STATE<sup>®</sup> is a registered trademark of National Semiconductor Corp.

## Schematic Diagram



\*DS1649/DS3649 only

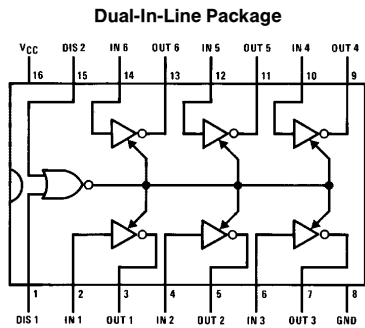
TL/F/7515-1

## Truth Table

Disable Input		Input	Output
DIS 1	DIS 2		
0	0	0	1
0	0	1	0
0	1	X	Hi-Z
1	0	X	Hi-Z
1	1	X	Hi-Z

X = Don't care  
Hi-Z = TRI-STATE mode

## Connection Diagram

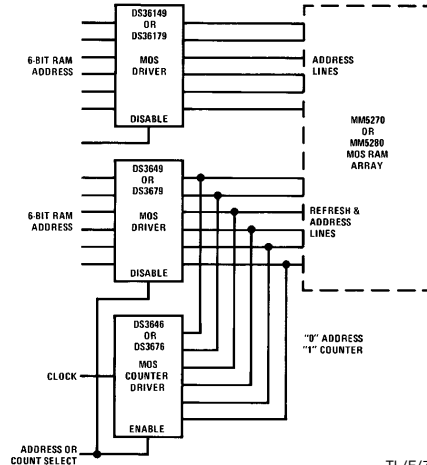


TL/F/7515-2

### Top View

Order Number DS1649J, DS3649J,  
DS1679J, DS3679J, DS3649N or DS3679N  
See NS Package Number J16A or N16A

## Typical Application



TL/F/7515-3

DS1649/DS3649/DS1679/DS3679 Hex TRI-STATE TTL to MOS Drivers

## Absolute Maximum Ratings (Note 1)

If Military/Aerospace specified devices are required, please contact the National Semiconductor Sales Office/Distributors for availability and specifications.

Supply Voltage	7.0V
Logical "1" Input Voltage	7.0V
Logical "0" Input Voltage	-1.5V
Storage Temperature Range	-65°C to +150°C
Maximum Power Dissipation* at 25°C	
Cavity Package	1371 mW
Molded Package	1280 mW
Lead Temperature (Soldering, 10 sec.)	300°C

## Operating Conditions

	Min	Max	Units
Supply Voltage ( $V_{CC}$ )	4.5	5.5	V
Temperature ( $T_A$ )			
DS1649, DS1679	-55	+125	°C
DS3649, DS3679	0	+70	°C

\*Derate cavity package 9.1 mW/°C above 25°C; derate molded package 10.2 mW/°C above 25°C.

## Electrical Characteristics (Note 2 and 3)

Symbol	Parameter	Conditions	Min	Typ	Max	Units	
$V_{IN(1)}$	Logical "1" Input Voltage		2.0			V	
$V_{IN(0)}$	Logical "0" Input Voltage				0.8	V	
$I_{IN(1)}$	Logical "1" Input Current	$V_{CC} = 5.5V, V_{IN} = 5.5V$		0.1	40	$\mu A$	
$I_{IN(0)}$	Logical "0" Input Current	$V_{CC} = 5.5V, V_{IN} = 0.5V$		-50	-250	$\mu A$	
$V_{CLAMP}$	Input Clamp Voltage	$V_{CC} = 4.5V, I_{IN} = -18 mA$		-0.75	-1.2	V	
$V_{OH}$	Logical "1" Output Voltage (No Load)	$V_{CC} = 4.5V, I_{OH} = -10 \mu A$	DS1649/DS1679	2.7	3.6		V
			DS3649/DS3679	2.8	3.6		V
$V_{OL}$	Logical "0" Output Voltage (No Load)	$V_{CC} = 4.5V, I_{OL} = 10 \mu A$	DS1649/DS1679		0.25	0.4	V
			DS3649/DS3679		0.25	0.35	V
$V_{OH}$	Logical "1" Output Voltage (With Load)	$V_{CC} = 4.5V, I_{OH} = -1.0 mA$	DS1649	2.4	3.5		V
			DS1679	2.5	3.5		V
			DS3649	2.6	3.5		V
			DS3679	2.7	3.5		V
$V_{OL}$	Logical "0" Output Voltage (With Load)	$V_{CC} = 4.5V, I_{OL} = 20 mA$	DS1649		0.6	1.1	V
			DS1679		0.4	0.5	V
			DS3649		0.6	1.0	V
			DS3679		0.4	0.5	V
$I_{1D}$	Logical "1" Drive Current	$V_{CC} = 4.5V, V_{OUT} = 0V$ (Note 4)		-250		mA	
$I_{0D}$	Logical "0" Drive Current	$V_{CC} = 4.5V, V_{OUT} = 4.5V$ (Note 4)		150		mA	
Hi-Z	TRI-STATE Output Current	$V_{OUT} = 0.4V$ to $2.4V$ , DIS1 or DIS2 = 2.0V	-40		40	$\mu A$	
$I_{CC}$	Power Supply Current	$V_{CC} = 5.5V$	One DIS Input = 3.0V All Other Inputs = X		42	75	mA
			All Inputs = 0V		11	20	mA

## Switching Characteristics ( $V_{CC} = 5V, T_A = 25^\circ C$ ) (Note 4)

Symbol	Parameter	Conditions	Min	Typ	Max	Units
$t_{S\pm}$	Storage Delay Negative Edge	(Figure 1) $C_L = 50 \text{ pF}$		4.5	7	ns
		$C_L = 500 \text{ pF}$		7.5	12	ns
$t_{S\pm}$	Storage Delay Positive Edge	(Figure 1) $C_L = 50 \text{ pF}$		5	8	ns
		$C_L = 500 \text{ pF}$		8	13	ns
$t_F$	Fall Time	(Figure 1) $C_L = 50 \text{ pF}$		5	8	ns
		$C_L = 500 \text{ pF}$		22	35	ns
$t_R$	Rise Time	(Figure 1) $C_L = 50 \text{ pF}$		6	9	ns
		$C_L = 500 \text{ pF}$		21	35	ns
$t_{ZL}$	Delay from Disable Input to Logical "0" Level (from High Impedance State)	$C_L = 50 \text{ pF}$ $R_L = 2 \text{ k}\Omega$ to $V_{CC}$ (Figure 2)		10	15	ns
$t_{ZH}$	Delay from Disable Input to Logical "1" Level (from High Impedance State)	$C_L = 50 \text{ pF}$ $R_L = 2 \text{ k}\Omega$ to GND (Figure 2)		8	15	ns
$t_{LZ}$	Delay from Disable Input to High Impedance State (from Logical "0" Level)	$C_L = 50 \text{ pF}$ $R_L = 400\Omega$ to $V_{CC}$ (Figure 3)		15	25	ns
$t_{HZ}$	Delay from Disable Input to High Impedance State (from Logical "1" Level)	$C_L = 50 \text{ pF}$ $R_L = 400\Omega$ to GND (Figure 3)		10	25	ns

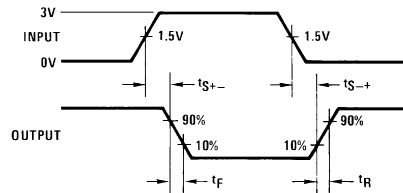
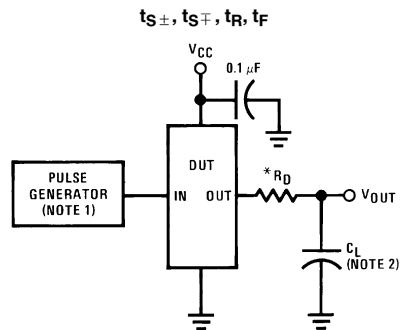
**Note 1:** "Absolute Maximum Ratings" are those values beyond which the safety of the device cannot be guaranteed. Except for "Operating Temperature Range" they are not meant to imply that the devices should be operated at these limits. The table of "Electrical Characteristics" provides conditions for actual device operation.

**Note 2:** Unless otherwise specified min/max limits apply across the  $-55^\circ C$  to  $+125^\circ C$  temperature range for the DS1649 and DS1679 and across the  $0^\circ C$  to  $+70^\circ C$  range for the DS3649 and DS3679. All typical values are for  $T_A = 25^\circ C$  and  $V_{CC} = 5V$ .

**Note 3:** All currents into device pins shown as positive, out of device pins as negative, all voltages referenced to ground unless otherwise noted. All values shown as max or min on absolute value basis.

**Note 4:** When measuring output drive current and switching response for the DS1679 and DS3679 a  $15\Omega$  resistor should be placed in series with each output. This resistor is internal to the DS1649/DS3649 and need not be added.

## AC Test Circuits and Switching Time Waveforms

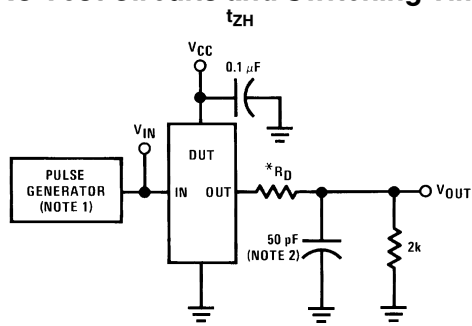


TL/F/7515-4

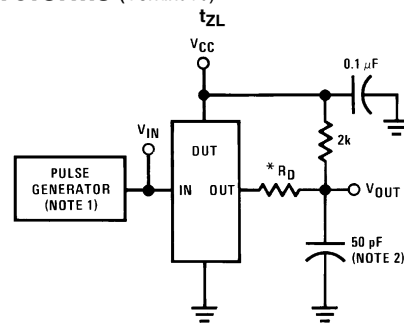
FIGURE 1

TL/F/7515-5

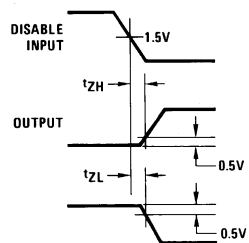
## AC Test Circuits and Switching Time Waveforms (Continued)



TL/F/7515-6

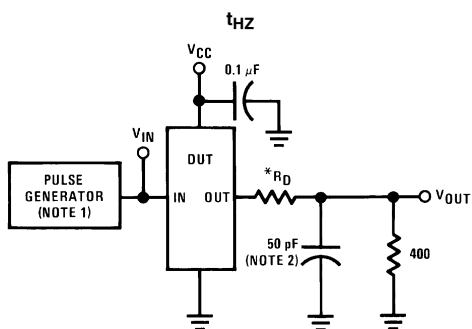


TL/F/7515-7

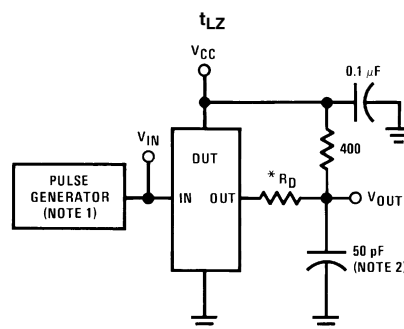


TL/F/7515-8

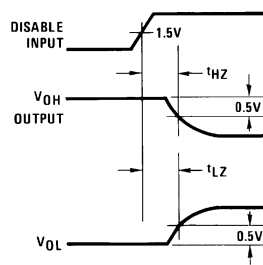
FIGURE 2



TL/F/7515-9



TL/F/7515-10



TL/F/7515-11

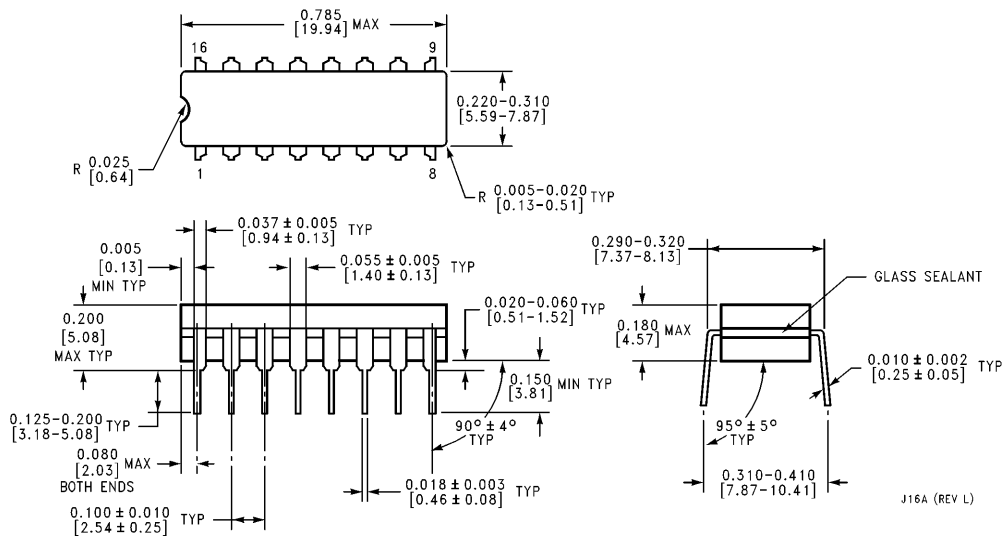
FIGURE 3

\*Internal on DS1649 and DS3649

**Note 1:** The pulse generator has the following characteristics:  $Z_{OUT} = 50\Omega$  and  $PRR \leq 1$  MHz. Rise and fall times between 10% and 90% points  $\leq 5$  ns.

**Note 2:**  $C_L$  includes probe and jig capacitance.

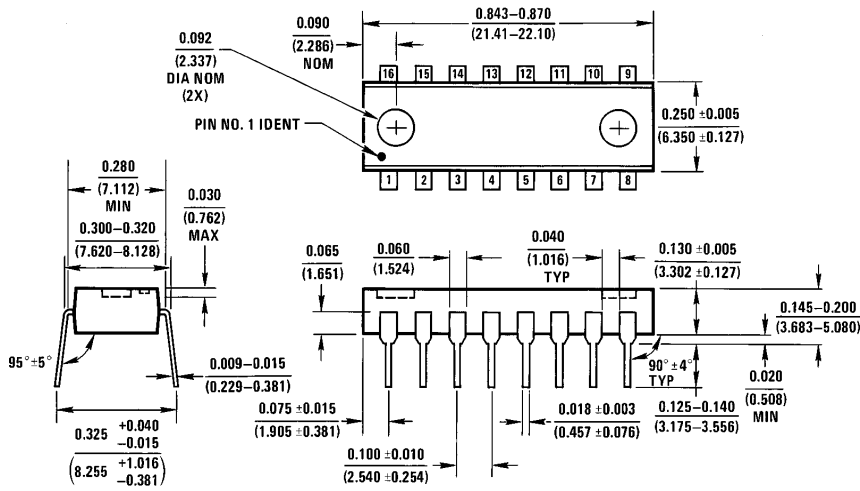
**Physical Dimensions** inches (millimeters)



**Ceramic Dual-In-Line Package (J)**  
**Order Number DS1649J, DS3649J,**  
**DS1679J or DS3679J**  
**NS Package Number J16A**

J16A (REV L)

**Physical Dimensions** inches (millimeters) (Continued)



**Molded Dual-In-Line Package (N)**  
**Order Number DS3649N or DS3679N**  
**NS Package Number N16A**

N16A (REV E)

**LIFE SUPPORT POLICY**

NATIONAL'S PRODUCTS ARE NOT AUTHORIZED FOR USE AS CRITICAL COMPONENTS IN LIFE SUPPORT DEVICES OR SYSTEMS WITHOUT THE EXPRESS WRITTEN APPROVAL OF THE PRESIDENT OF NATIONAL SEMICONDUCTOR CORPORATION. As used herein:

1. Life support devices or systems are devices or systems which, (a) are intended for surgical implant into the body, or (b) support or sustain life, and whose failure to perform, when properly used in accordance with instructions for use provided in the labeling, can be reasonably expected to result in a significant injury to the user.
2. A critical component is any component of a life support device or system whose failure to perform can be reasonably expected to cause the failure of the life support device or system, or to affect its safety or effectiveness.



**National Semiconductor Corporation**  
 1111 West Bardin Road  
 Arlington, TX 76017  
 Tel: 1(800) 272-9959  
 Fax: 1(800) 737-7018

**National Semiconductor Europe**  
 Fax: (+49) 0-180-530 85 86  
 Email: cnjwge@tevm2.nsc.com  
 Deutsch Tel: (+49) 0-180-530 85 85  
 English Tel: (+49) 0-180-532 78 32  
 Français Tel: (+49) 0-180-532 93 58  
 Italiano Tel: (+49) 0-180-534 16 80

**National Semiconductor Hong Kong Ltd.**  
 19th Floor, Straight Block,  
 Ocean Centre, 5 Canton Rd.  
 Tsimshatsui, Kowloon  
 Hong Kong  
 Tel: (852) 2737-1600  
 Fax: (852) 2736-9960

**National Semiconductor Japan Ltd.**  
 Tel: 81-043-299-2309  
 Fax: 81-043-299-2408

National does not assume any responsibility for use of any circuitry described, no circuit patent licenses are implied and National reserves the right at any time without notice to change said circuitry and specifications.

This datasheet has been downloaded from:

[www.DatasheetCatalog.com](http://www.DatasheetCatalog.com)

Datasheets for electronic components.

# National Semiconductor was acquired by Texas Instruments.

[http://www.ti.com/corp/docs/investor\\_relations/pr\\_09\\_23\\_2011\\_national\\_semiconductor.html](http://www.ti.com/corp/docs/investor_relations/pr_09_23_2011_national_semiconductor.html)

This file is the datasheet for the following electronic components:

DS3649N - <http://www.ti.com/product/ds3649n?HQS=TI-null-null-dscatalog-df-pf-null-wwe>

DS3679J - <http://www.ti.com/product/ds3679j?HQS=TI-null-null-dscatalog-df-pf-null-wwe>

DS3679N - <http://www.ti.com/product/ds3679n?HQS=TI-null-null-dscatalog-df-pf-null-wwe>

DS3649J - <http://www.ti.com/product/ds3649j?HQS=TI-null-null-dscatalog-df-pf-null-wwe>



LittleDiode supplies new, hard to find or obsolete electronic components and semiconductors all over the world.

With over two million different components listed you are sure to find the part you need.

Feel free to visit us today at our online store:

**[LittleDiode.com](http://LittleDiode.com)**

Looking forward to providing you with the best possible service.