

CMOS/DMOS High Speed Analog Switch



CWB2214

FEATURES

- High OFF Isolation. >40dB @ 100MHz
 >25dB @ 200MHz
- Fast Switching
- CMOS Compatible Inputs
- Wide Bandwidth. -3dB @ 250MHz
- Low ON Resistance

APPLICATIONS

- RF and Video Switches
- High Frequency Data Acquisition
- High Frequency Multiplexing

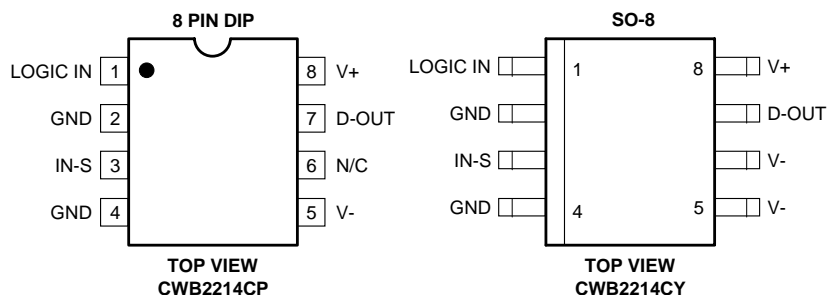
DESCRIPTION

The CWB2214 is a High Speed SPST Analog Switch designed utilizing Calogic's proprietary CMOS/DMOS processing techniques. The device features low-power CMOS input logic and level translation circuitry and high speed, low capacitance lateral DMOS switches fabricated together in a monolithic structure.

ORDERING INFORMATION

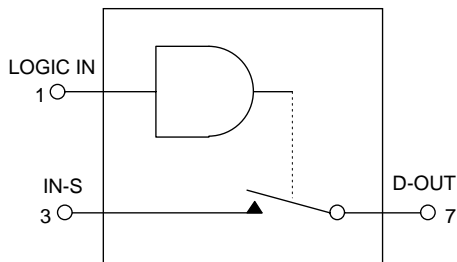
Part	Package	Temperature Range
CWB2214CP	Plastic 8-Pin Dip	0 to 85°C
CWB2214CY	Plastic SO-8	0 to 85°C
XCWB2214	Sorted Chips in Carriers	0 to 85°C

PIN CONFIGURATION



CWB

FUNCTIONAL DIAGRAM



One SPST Switch per Package.
 Switch shown in Logic '1' Input Position.
 Logic '0' ≤ 1.0V
 Logic '1' ≥ 4.5V

NOTE: All devices contain diodes to protect inputs against damage due to high static voltages or electric fields; however, it is advised that precautions be taken not to exceed the maximum recommended input voltages. All unused inputs must be connected to an appropriate logic level (V_{DD} or GND).

ABSOLUTE MAXIMUM RATINGS

V-	Negative Supply Voltage	-20V
V+	Positive Supply Voltage	+20V
V _{IN}	Control Input Voltage Range	V+ +0.3V V- -0.3V
I _L	Continuous Current, any Pin except S or D	20mA
I _S	Continuous Current, S or D	40mA
I _S	Peak Pulsed Current, S or D, 80μsec, 1%, Duty Cycle	100mA
T _J	Junction Temperature Range	-55 to +125°C
T _S	Storage Temperature Range	-55 to +125°C
P _D	Power Dissipation (derate at 12mW/°C, above +85°C)	500mW

RECOMMENDED OPERATING CONDITIONS

V-	Negative Supply Voltage	-5 to -15V
V+	Positive Supply Voltage	+5 to +15V
V _{IN}	Control Input Voltage Range	0 to +5V
T _{OP}	Operating Temperature	0 to +85°C

ELECTRICAL CHARACTERISTICS (T_A = +25°C, V₋ = -15V, V₊ = +15V unless otherwise noted)

SYMBOL	PARAMETER	MIN	TYP	MAX	UNITS	TEST CONDITIONS
STATIC						
V _{ANALOG}	Analog Signal Range	-10		+10	V	
r _{DS(ON)}	Switch ON Resistance		45	80	Ω	V _S = -10V
			50	80		V _S = +2.0V
			130	160		V _S = +10V
V _{IH}	High Level Input Voltage	4.5	3.4		V	
V _{IL}	Low Level Input Voltage			1.0		
I _{IN}	Logic Input Leakage Current		0.01	0.1	μA	V _{IN} = +5.0V
			0.02	0.1		V _{IN} = +15V
I _{D(OFF)}	Switch OFF Leakage Current		0.2	5.0	nA	V _D = +10V, V _S = -10V, V _{IN} = 5V
I _{S(OFF)}			0.2	5.0		V _S = +10V, V _D = -10V, V _{IN} = 5V
I ₋	Negative Supply Quiescent Current			-8.0	mA	V _{IN} = 0 or V ₊
I ₊	Positive Supply Quiescent Current			8.0		
DYNAMIC						
t _{ON}	Switch Turn-ON Time		40	60	nsec	V _{IN} = 5.0V, R _L = 50Ω C _L = 12pF
t _{OFF}	Switch Turn-OFF Time		20	40		
O _{IRR}	OFF Isolation Rejection Ratio	37	40		dB	f = 100MHz
		22	25			f = 200MHz
I _L	Insertion Loss		7.8	13		R _L = 50Ω, f = 200MHz
C _d	Drain-Node Capacitance		0.3		pF	V _D = 0
C _s	Source-Node Capacitance		3.0			V _S = 0

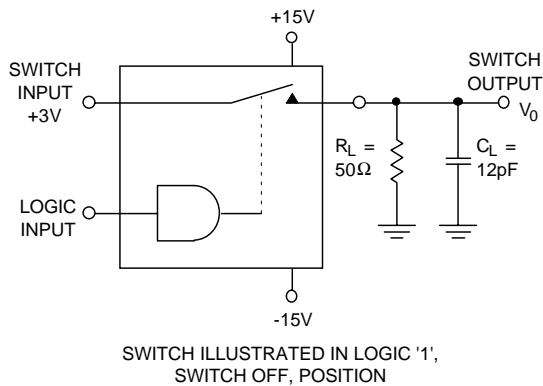
ELECTRICAL CHARACTERISTICS ($V_- = -15V$, $V_+ = +15V$ unless otherwise noted)

LIMITS AT TEMPERATURE EXTREMES

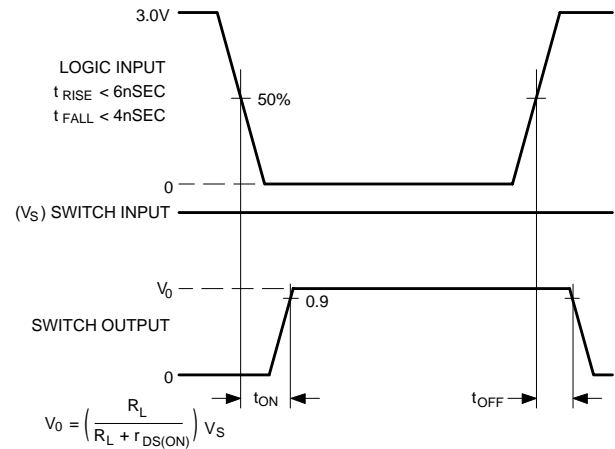
SYMBOL	PARAMETER	MAXIMUM TA @ TA =	UNITS	TEST CONDITIONS
		+85°C		
STATIC				
V _{ANALOG}	Analog Signal Range	±10	V	
r _{DS(ON)}	Switch ON Resistance	120	Ω	V _S = -10V
		120		V _S = +2.0V
		240		V _S = +10V
I _{IN}	Logic Input Leakage Current	1.0	μA	V _{IN} = +5.0V
		2.0		V _{IN} = +15V
I _{D(OFF)}	Switch OFF Leakage Current	200	nA	V _D = +10V, V _S = -10V, V _{IN} = 5V
I _{S(OFF)}		200		V _S = +10V, V _D = -10V, V _{IN} = 5V
I ₋	Negative Supply Quiescent Current	-10	mA	V _{IN} = 0 or V ₊
I ₊	Positive Supply Quiescent Current	10		

TYPICAL PERFORMANCE CHARACTERISTICS (T_A = +25°C, unless otherwise specified)

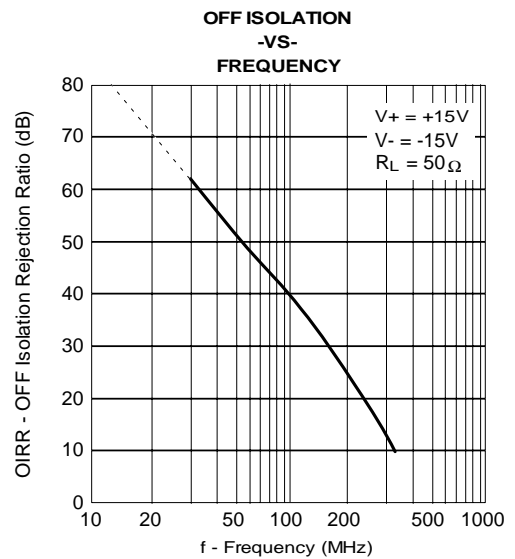
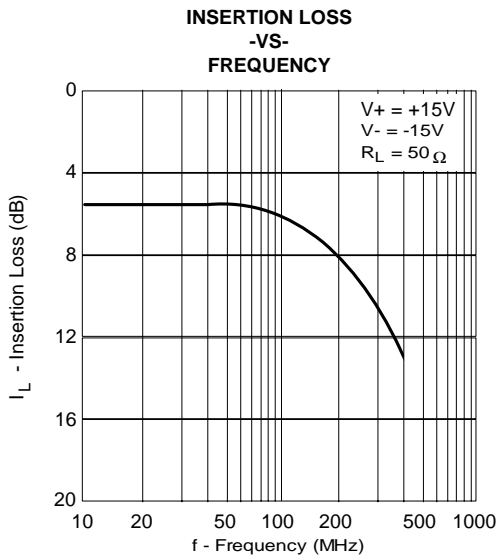
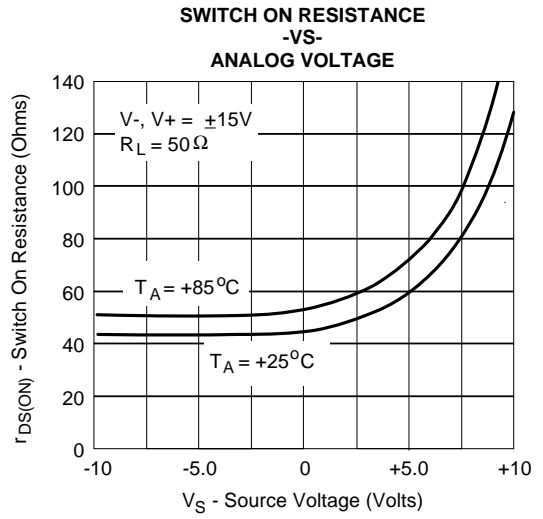
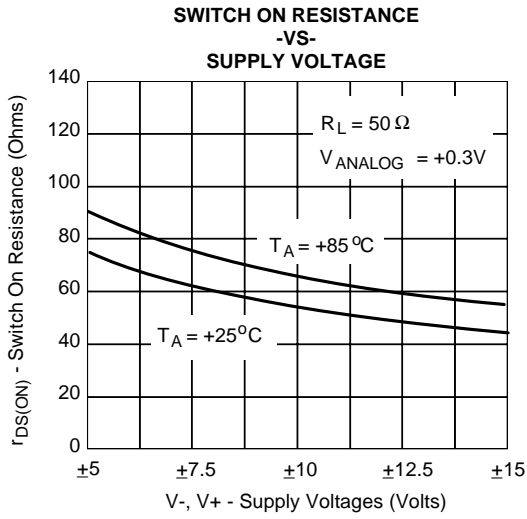
SWITCHING TIMES TEST CIRCUIT



TEST WAVEFORMS



TYPICAL PERFORMANCE CHARACTERISTICS ($T_A = +25^\circ\text{C}$ unless otherwise specified)





LittleDiode supplies new, hard to find or obsolete electronic components and semiconductors all over the world.

With over two million different components listed you are sure to find the part you need.

Feel free to visit us today at our online store:

LittleDiode.com

Looking forward to providing you with the best possible service.