

SL9999

400MHz ADC DRIVER-AMPLIFIER

The SP9999 is a monolithic high speed high performance operational amplifier. Although primarily intended to drive the inputs of analog to digital converters, the device is capable of driving any other circuit including those that present a low impedance and high capacitive load. Many other internal features such as programmable open loop gain, programmable output current, internal band gap voltage reference, DC buffer and output DC offset circuitry give the device the flexibility for use in a wide range of applications.

ORDERING INFORMATION

SP9999 B LC (Industrial LCC -40° to +85°C)

FEATURES

- Gain-Bandwidth Product 2GHz at 20dB
- Unity Gain-Bandwidth 400MHz
- Slew Rate 1300V/μs Rising (typ)
- Slew Rate 630V/μs Falling (typ)
- ±50mA Output Current (Programmable)
- Non-saturating
- High Output Drive
- On-chip LF Buffer for Applying DC Offset
- Flexible Supply Range:
V_{CC} = +8V to +12V
V_{EE} = -4.5V to -5.5V
- Output Signal Handling (V_{CC} = +12V, V_{EE} = -5.2V)
V_{out} = 6V p-p (max.)
- Input Signal Handling (V_{CC} = +12V, V_{EE} = -5.2V)
V_{in} = +2.8V to -2.5V (max.)

APPLICATIONS

- High Speed Flash ADC Driver
- Wideband, Buffer/Level Shifter
- Wideband IF Amplification
- Video Amplifier/Line Driver
- Fast Settling Pulse Amplifier
- High Speed Op-Amp Applications

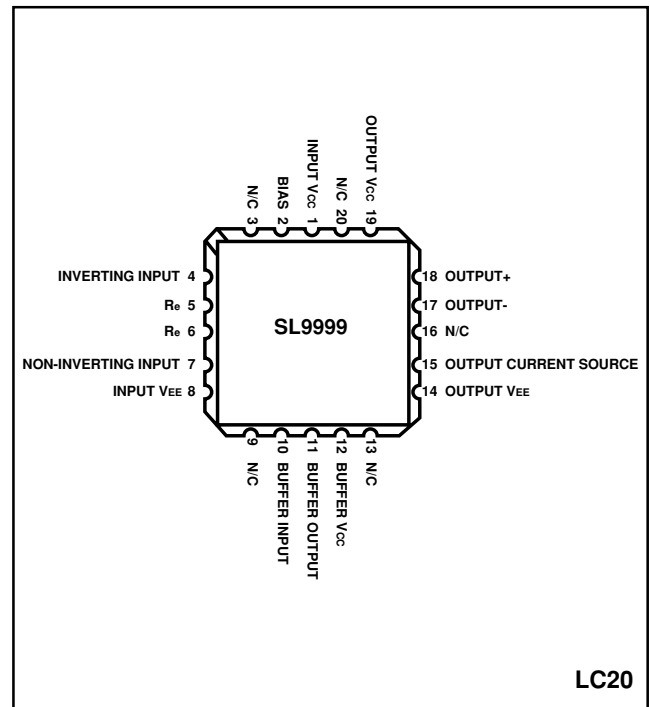


Fig.1 Pin connections - top view

ABSOLUTE MAXIMUM RATINGS

Supply Voltage (V _{CC} to V _{EE})	20V
Input Voltage (Inv I/P to Non-Inv I/P)	±5V
Storage Temperature	-65°C to +175°C
Chip Operating Temperature	+175°C
Operating Temperature	-40°C to +85°C

ELECTRICAL CHARACTERISTICS

These characteristics are guaranteed over the following conditions (unless otherwise stated):

$T_{amb} = 25^{\circ}C$, $V_{CC} = +12V$, $V_{EE} = -5V$, Test circuit Fig.3.

Characteristic	Value			Units	Conditions
	Min.	Typ.	Max.		
Equivalent input noise		33		nV/ \sqrt{Hz}	50 Ω source impedance, BW = 100MHz
Supply current (no load)		35	43	mA	$V_{CC} = +12V$, $V_{EE} = -5V$
Gain-bandwidth product		2		GHz	X10 gain
Unity gain bandwidth (small sig)	800	400		MHz	$R_e = 820\Omega$, $R_L = 50\Omega$
Slew rate RISING	500	1300		V/ μs	$R_L = 50\Omega$
Slew rate FALLING		630		V/ μs	$R_L = 50\Omega$
Settling time		24		ns	To 1% (X10 gain)
Open loop gain		65		dB	50 Ω load
Maximum iout			± 50	mA	Programmable See Application Notes
Output bias current	15	17	20	mA	Pin 12 O/C
Supply line rejection		40		dB	Referred to input
Supply voltage VEE to VCC	12.5		18	V	
Common mode rejection	55			dB	50 Ω load
Input offset (Note 1)		± 5	± 15	mV	$R_e = 100\Omega$
Input bias current		4.5	18	μA	
Buffer bandwidth		60		MHz	-3dV $R_L = 1k\Omega$ (Pulldown resistor)
Buffer output current			15	mA	

NOTE

Input offset is dependent on R_e . For lowest offset $R_e = 0$ ohms.

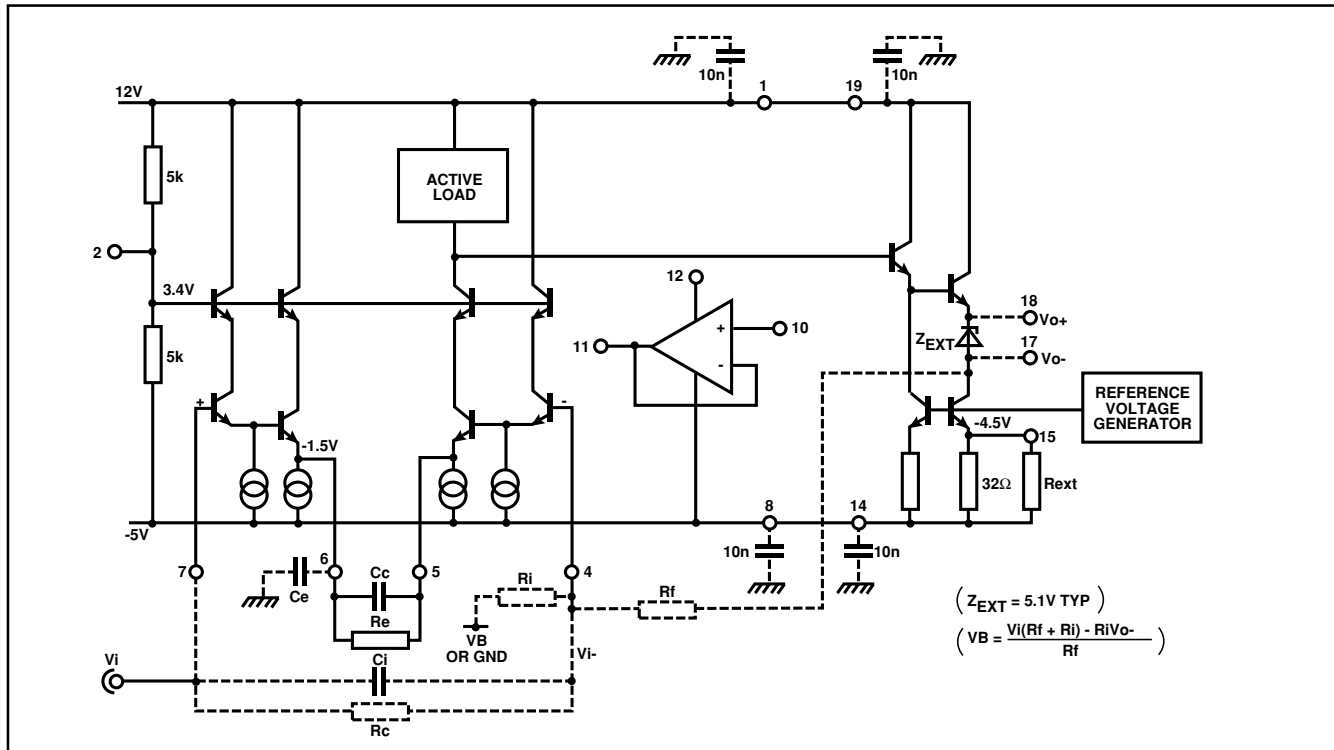


Fig.2 Equivalent circuit with standard external components

APPLICATION NOTES

The SL9999 may be used as a high frequency amplifier in any of the usual op-amp configurations (amplifiers, integrators, etc).

In most applications, the output of the SL9999 is taken from pin 13 (V_{out-}), DC level shifting can be obtained by applying feedback from pin 17 to pin 4 and taking the output from pin 18 (V_{out+} , see Fig.2). Alternatively, a DC offset can be applied through the low-drift on-chip buffer (pins 10 and 11) to V_B .

The Zener diode between pins 17 and 18 can also be divided into smaller value Zeners or resistors to give a range of DC levels at the output.

Biasing Conditions (25°C)

For unsorted outputs the peak signal voltages on V_{o+} , V_{o-} and the inputs should comply with the following conditions:

$$A. \quad V_{o+}(\text{MIN}) \geq \frac{V_{CC} + V_{EE}}{2} - 1.4V$$

$$B. \quad V_{o+}(\text{MAX}) \leq V_{CC} - 4.0V$$

$$C. \quad V_{o-}(\text{MIN}) \geq V_{EE} + 1.4V$$

$$D. \quad V_{i+} \text{ and } V_{i-} \leq \frac{V_{CC} + V_{EE}}{2} - 0.9V$$

$$E. \quad V_{i+} \text{ and } V_{i-} \geq V_{EE} + 3.2V$$

Bias voltage values at several nodes are indicated on Fig.2.

R_{ext} is connected from pin 15 to pin 14 (V_{EE}) to increase output bias current I_{out} . This current should not exceed 50mA. The value of R_{ext} is calculated as follows:

$$R_{ext} = \left[\frac{500}{I_{out} - 16} \right] \Omega$$

where I_{out} is in mA.

The on-chip LF buffer has a small-signal bandwidth of 60MHz with 1k Ω load, and has an input/output signal handling capability of 8V. the output can deliver 15mA; an external pull-down resistor is required.

High Frequency Stability

All component leads should be kept as short as possible, particularly at the summing junction. Also it is important to keep stray capacitance at the summing junction to an absolute minimum.

A ground plane should be used to minimise ant earth induced currents between the input and output circuits.

The use of good power supply bypass capacitors (10nF Ceramic) will improve the overall performance. They should be close to the device supply pins. We also recommend electrolytic capacitors in parallel with Ceramic for supply decoupling.

Locate the signal source and load close to the circuit with proper termination - for 50 Ω source use a 50 Ω bead resistor. Other resistors should be carbon composition.

Voltage Gain

Stable closed loop operation is ensured by changing the value of the degeneration resistor (R_e) between pins 5 and 6 according to the selected closed loop gain. As closed loop gain decreases the value of R_e should be increased.

A graph of recommended R_e with gain is given in Fig.4.

Power Dissipation

A Zener diode is used between pins 17 and 18 to dissipate power externally and to provide DC offset of the output.

For -5V, +12V range a 4.7V to 5.1V Zener may be used.

For lower cost applications a bypassed resistor can conveniently replace the Zener diode. Its value may be calculated from the voltage drop and current through the output stage. for example, for 15mA output current a 330 Ω resistor could be used.

Although some power is dissipated in the external Zener, a heatsink on the SL9999 will be necessary if power > 800mW is to be dissipated.

Bandwidth Compensation

Bandwidth at higher gains can be improved by a capacitor (C_c) across the degeneration resistor R_e . For example, a non-inverting closed loop gain of 10, 10pF will increase the bandwidth to 280MHz at 50 Ω load condition.

A decoupling capacitor (C_e) from pin 6 will compensate the first pole roll-off and hence reduce the noise bandwidth. For a 200MHz bandwidth an 18pF capacitor may be used with the suggested PCB layout.

A capacitor (C_i) and resistor (R_c) of suitable value between the two inputs will reduce high frequency peaking.

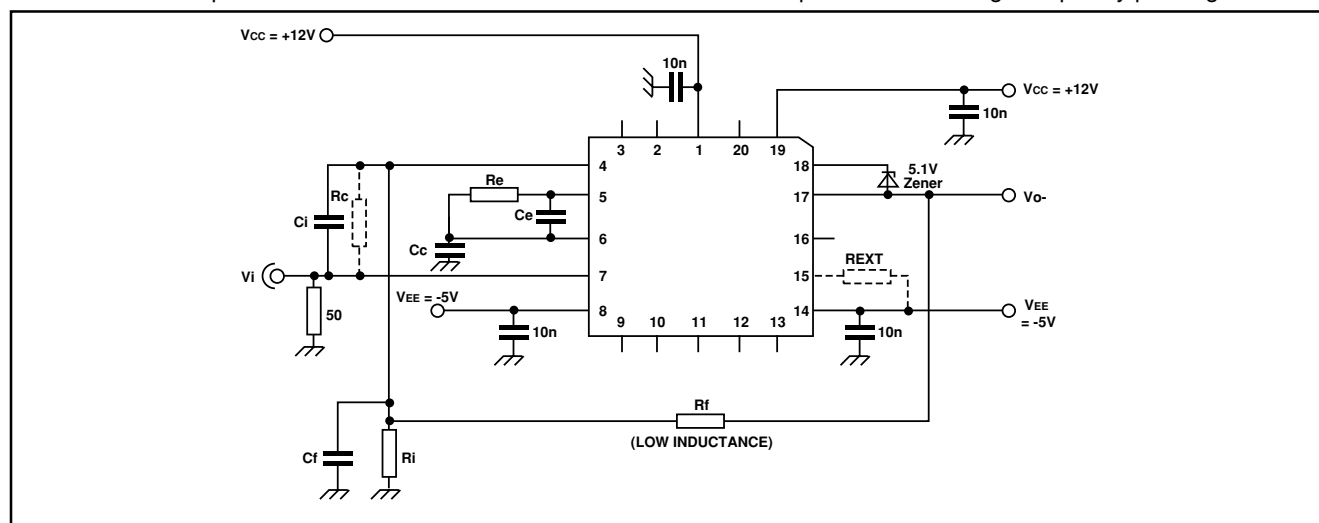


Fig.3 Test/applications circuit for 50 Ω load, 10nF ceramic decoupling capacitors

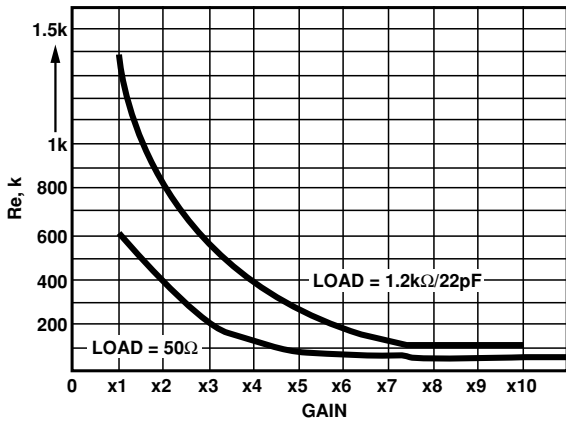


Fig.4 Typical closed loop gain v. minimum value of degeneration resistor R_e .

NOTE: Input offset is proportional to R_e value.

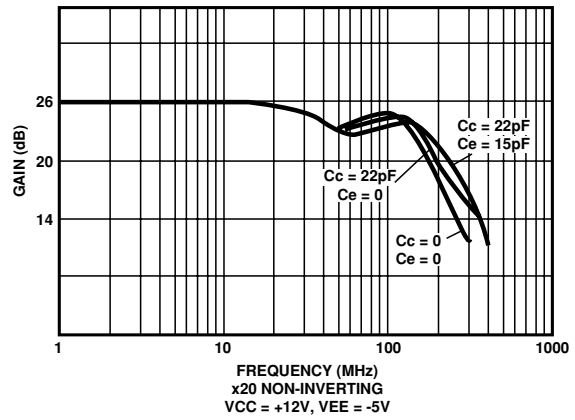


Fig.5 Typical frequency response for the test circuit of Fig.3, x20 gain, non-inverting, 50Ω load, $R_f = 10.6k\Omega$, $R_1 = 560\Omega$, $R_e = 22\Omega$.

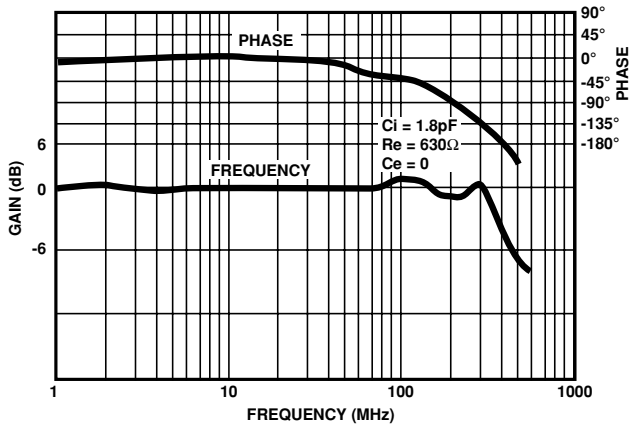


Fig.6 Typical frequency/phase performance graphs for the circuit of Fig.3, x1 gain, non-inverting, 50Ω load, $R_f = 560\Omega$, $R_1 = \infty$.

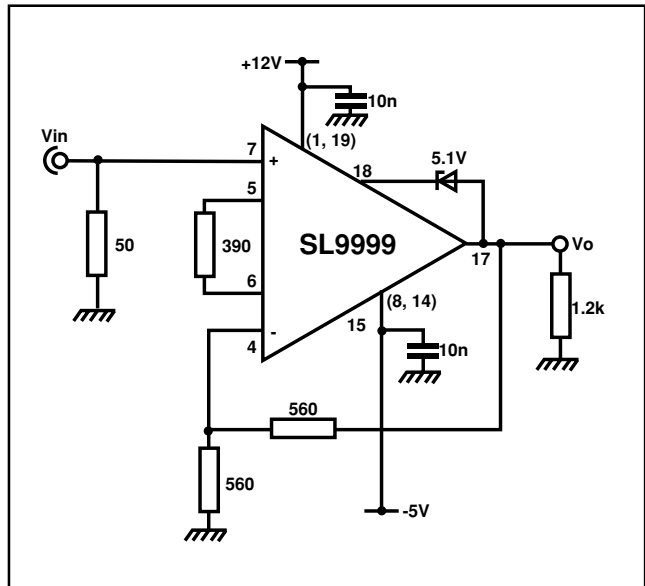


Fig.7 Test circuit for large and small signal response, and slew rate (see Figs. 8 to 11). $V_{CC} = +12V$, $V_{EE} = -5V$.

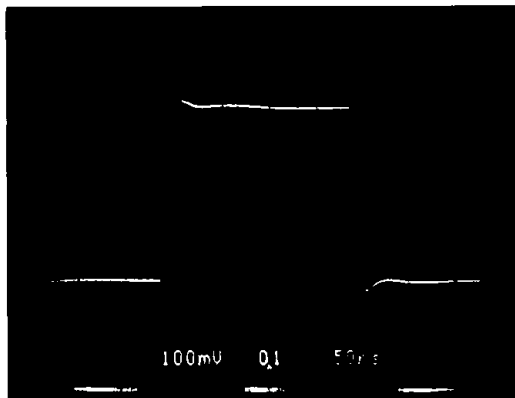


Fig.8 Small signal response

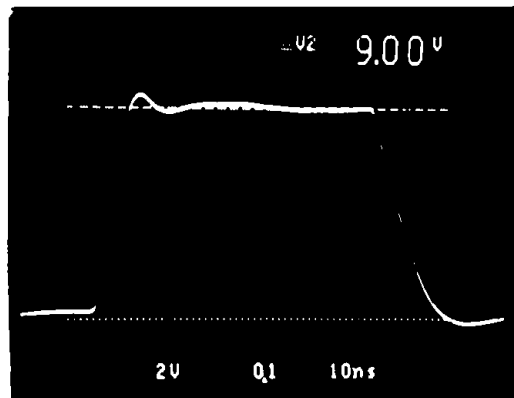


Fig.9 Large signal response

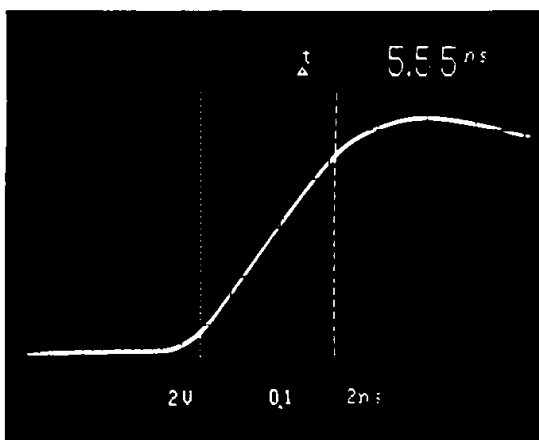


Fig.10 Rising edge 10% to 90% points 1300V/ μ s

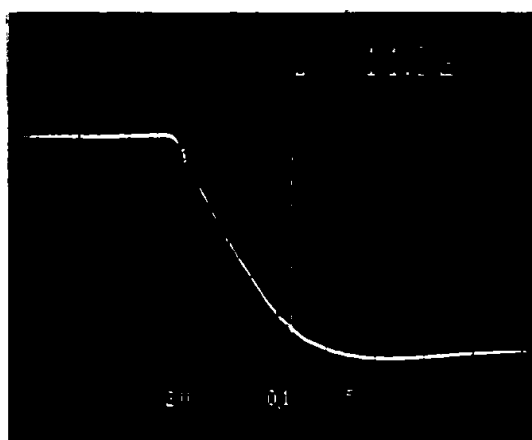


Fig.11 Falling edge 10% to 90% points 630V/ μ s

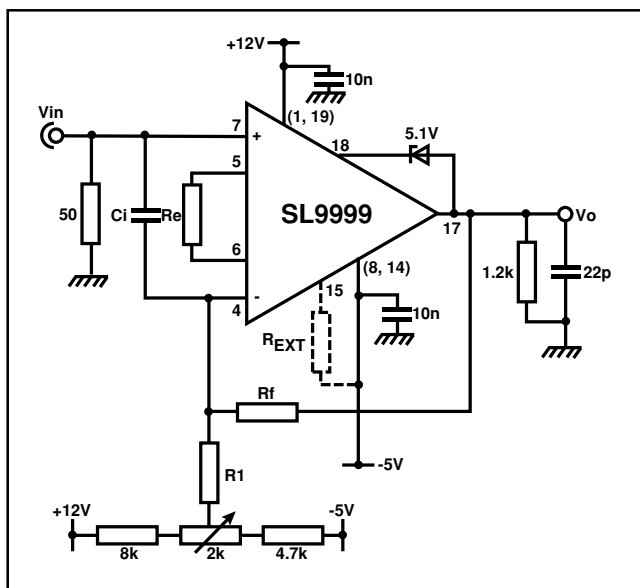


Fig.12 Application circuit for capacitor load e.g. high speed flash ADC input

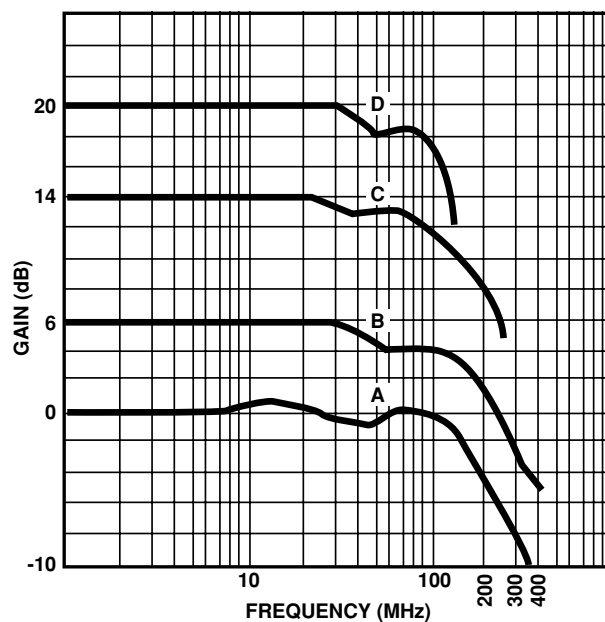


Fig.13 Typical frequency response plots for the circuit of Fig.12 (Load 22pF/1.2k Ω)

TYPICAL APPLICATION

Response (see Fig.13)	Gain	R _f (Ω)	R _i (Ω)	R _e (Ω)	C _f (pF)	R _{ext} (Ω)	VO/P (p-p)	V _{CC} (V)	V _{EE} (V)
A	X1	2.2k	∞	1.8k	0	∞	1	+12	-5
B	X2	560	560	1.2k	18	50	2	+12	-5
C	X5	2.2k	560	270	10	∞	1	+12	-5
D	X10	5.6k	560	68	0	10	1	+12	-5

Table 1 Recommended components values for the test circuit of Fig.12

NOTE

C_f and C_i are dependent on layout and used to compensate the effects of strays.

SL9999

For applications that require accurate gain flatness over the full frequency range, the inverting mode of operation is recommended. See Fig.14.

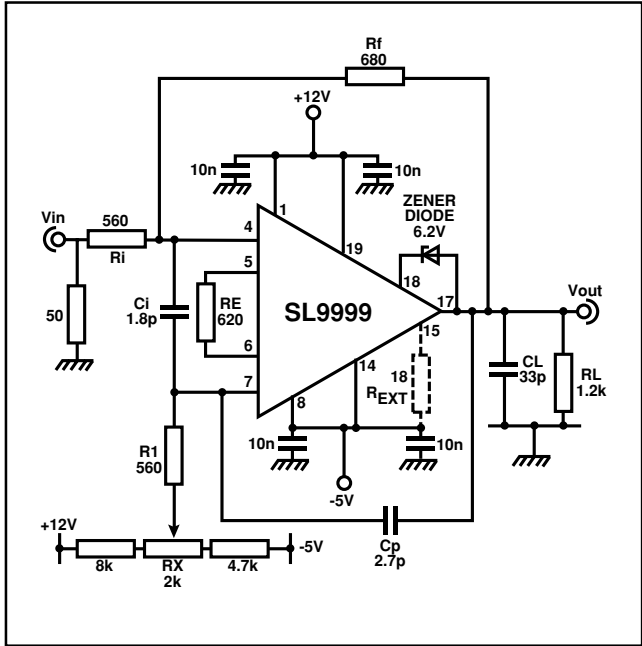


Fig.14 Typical test/applications circuit for inverting mode.
Load 33pF/1.2kΩ.

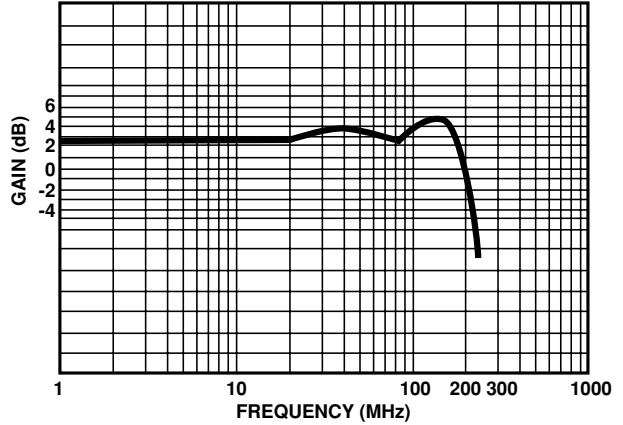
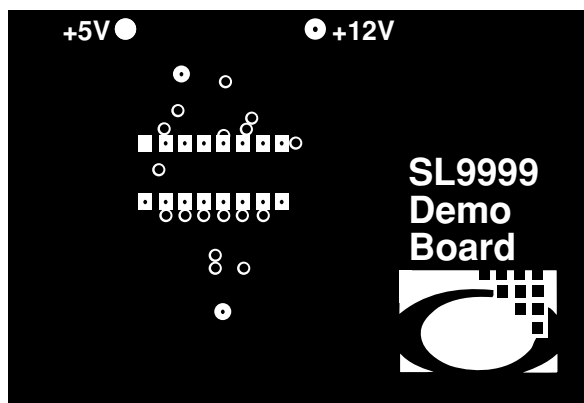
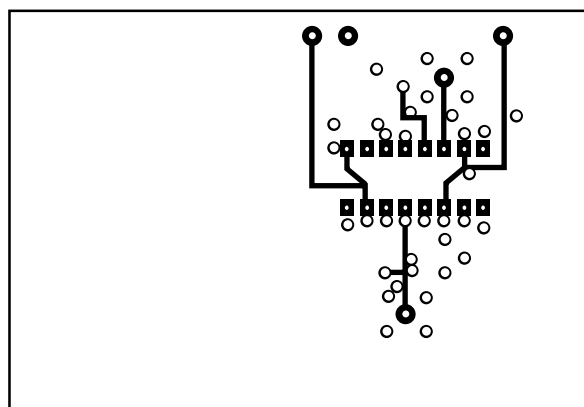


Fig.15 Frequency response of SL9999 with $C_L = 33\text{pF}$,
 $C_P = 2.7\text{pF}$, $R_i = 680$, $R_L = 1.2\text{k}$, $C_i = 1.8\text{pF}$, $R_1 = 560$,
 $V_o = 1\text{V p-p}$ (See Test Circuit of Fig.15)

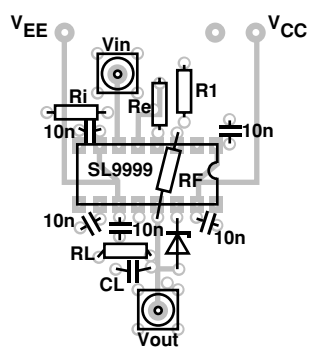
CONSTRUCTION



(a) SL9999 ground plane, component side



(b) SL9999 board, track side



(c) Component location. NOTE: I/P and O/P are sub-vis type 50Ω connectors.

Fig.16 PCB layout for SL9999 demonstration board (Fig.12) viewed from component side and underside



HEADQUARTERS OPERATIONS
GEC PLESSEY SEMICONDUCTORS
Cheney Manor, Swindon,
Wiltshire SN2 2QW, United Kingdom.
Tel: (0793) 518000
Fax: (0793) 518411

GEC PLESSEY SEMICONDUCTORS
P.O. Box 660017
1500 Green Hills Road,
Scotts Valley, California 95067-0017,
United States of America.
Tel: (408) 438 2900
Fax: (408) 438 5576

CUSTOMER SERVICE CENTRES

- **FRANCE & BENELUX** Les Ulis Cedex Tel: (1) 64 46 23 45 Fax : (1) 64 46 06 07
- **GERMANY** Munich Tel: (089) 3609 06-0 Fax : (089) 3609 06-55
- **ITALY** Milan Tel: (02) 66040867 Fax: (02) 66040993
- **JAPAN** Tokyo Tel: (03) 5276-5501 Fax: (03) 5276-5510
- **NORTH AMERICA Integrated Circuits and Microwave Products** Scotts Valley, USA
Tel (408) 438 2900 Fax: (408) 438 7023.
Hybrid Products, Farmingdale, USA Tel (516) 293 8686 Fax: (516) 293 0061.
- **SOUTH EAST ASIA** Singapore Tel: (65) 3827708 Fax: (65) 3828872
- **SWEDEN** Stockholm, Tel: 46 8 702 97 70 Fax: 46 8 640 47 36
- **UK, EIRE, DENMARK, FINLAND & NORWAY**
Swindon Tel: (0793) 518510 Fax : (0793) 518582

These are supported by Agents and Distributors in major countries world-wide.

© GEC Plessey Semiconductors 1993 Publication No. DS2078 Issue No. 2.1 December 1993



<http://www.mitelsemi.com>

World Headquarters - Canada

Tel: +1 (613) 592 2122
Fax: +1 (613) 592 6909

North America

Tel: +1 (770) 486 0194
Fax: +1 (770) 631 8213

Asia/Pacific

Tel: +65 333 6193
Fax: +65 333 6192

**Europe, Middle East,
and Africa (EMEA)**

Tel: +44 (0) 1793 518528
Fax: +44 (0) 1793 518581

Information relating to products and services furnished herein by Mitel Corporation or its subsidiaries (collectively "Mitel") is believed to be reliable. However, Mitel assumes no liability for errors that may appear in this publication, or for liability otherwise arising from the application or use of any such information, product or service or for any infringement of patents or other intellectual property rights owned by third parties which may result from such application or use. Neither the supply of such information or purchase of product or service conveys any license, either express or implied, under patents or other intellectual property rights owned by Mitel or licensed from third parties by Mitel, whatsoever. Purchasers of products are also hereby notified that the use of product in certain ways or in combination with Mitel, or non-Mitel furnished goods or services may infringe patents or other intellectual property rights owned by Mitel.

This publication is issued to provide information only and (unless agreed by Mitel in writing) may not be used, applied or reproduced for any purpose nor form part of any order or contract nor to be regarded as a representation relating to the products or services concerned. The products, their specifications, services and other information appearing in this publication are subject to change by Mitel without notice. No warranty or guarantee express or implied is made regarding the capability, performance or suitability of any product or service. Information concerning possible methods of use is provided as a guide only and does not constitute any guarantee that such methods of use will be satisfactory in a specific piece of equipment. It is the user's responsibility to fully determine the performance and suitability of any equipment using such information and to ensure that any publication or data used is up to date and has not been superseded. Manufacturing does not necessarily include testing of all functions or parameters. These products are not suitable for use in any medical products whose failure to perform may result in significant injury or death to the user. All products and materials are sold and services provided subject to Mitel's conditions of sale which are available on request.

M Mitel (design) and ST-BUS are registered trademarks of MITEL Corporation
Mitel Semiconductor is an ISO 9001 Registered Company
Copyright 1999 MITEL Corporation
All Rights Reserved
Printed in CANADA

TECHNICAL DOCUMENTATION - NOT FOR RESALE